

# Opti S Invisible floating bottom stop



## Zip models and functions

S43 CE

S44 CE

S54 CE

S64 CE

## Main uses

Ladies' skirts

Ladies' dresses

Ladies' trousers

## Benefits

Opti S Invisible floating bottom stop prevents damage to the seam below the zip and fabric of the garment.

## Description

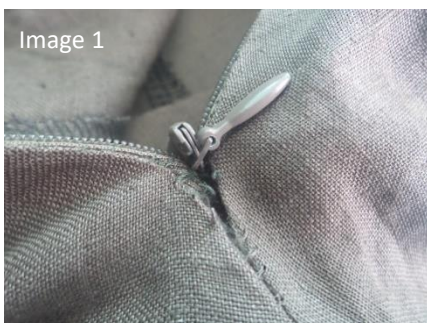
The additional floating bottom stop can be moved along the zip length and positioned as necessary, depending on the required effective opening length. When adjusted to just above the seam bartack it prevents:

- Damage of the seam, fabric or lining
- Slider jamming
- Puller is easily accessible with no risk of entering under the seam
- No extra unplanned labour cost for the garment manufacturer
- Reduced faulty seam risk on the garment

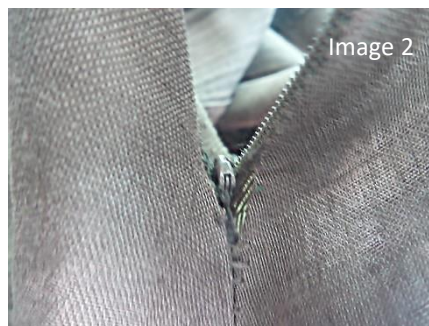
This flexible solution is available for all invisible zip sizes, bringing added satisfaction to the end user.

## Why Opti S Invisible floating bottom stop?

In some ladies garments, when opening an invisible zip, the slider reaches and touches the seam at the base of the opening. When this is done continuously it often leads to damage this seam, causing the possibility of fabric jamming into the slider. In extreme situations the fabric could even be destroyed. (Image 1)



Unless addressed, it's possible for the slider to enter under the seam, making it difficult to locate the puller to close the zip. (Image 2)



Opti S Invisible floating bottom stop is made to protect the seam, fabric or lining from being damaged by the slider.

**In order to get correct results please refer to our Invisible Opti zips best practice brochure.**