



Coats Webflex HEN

Coats Webflex HEN is manufactured by wrapping special air-jet or ring spun cotton fibre around a continuous filament nylon core, to form a yarn used in the weft of high performance tyre fabrics.

Special elongation settings in Coats Webflex HEN yarn enables the tyre to be formed to precise dimensions and shape. The unique yarn spinning process also allows the fabric weaving process to operate at speeds in excess of 750ppm with minimal stops.

In addition, the special cotton creates heat protection for the nylon core as it goes through the tyre fabric dipping process.

COTTON
WRAPPED HIGH
ELONGATION
NYLON

Product Information



Main Uses:

- Weft yarn in tyre cord fabric manufacture

Why choose Webflex HEN?

- High tenacity nylon core.
- Allows high weaving speed with minimal stops.
- Very low fly / dust resulting in minimal requirement for room cleaning.
- Available in two sizes.
- High temperature resistance to allow maximum dipping temperature.
- 90% knotless product for high loom efficiencies.
- R04425 is the same product as R04420, but with a 15% yield advantage.
- Meets Coats restricted substance list.

Technical Services

Our team of experts deliver innovative solutions globally.





Coats Webflex HEN

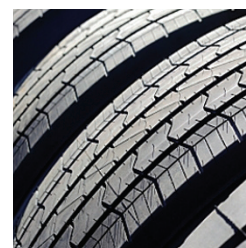
COTTON
WRAPPED HIGH
ELONGATION
NYLON

Product Information

Tex	Ne	Strength cN	Approx Elongation %	
			Before Dipping	After Dipping
21	26 / 1	200	240	100
27	21 / 1	245	240	100

Further Product Details:

Product Details	Tex 21	Tex 27
BIC	R04425	R04420
Cone Colour		
Material	Nylon / Cotton	Nylon / Cotton
Core	Nylon	Nylon
Cover	Peeler Cotton	Peeler Cotton
Type	V-Extensible	V-Extensible
Use	Weft Yarn	Weft Yarn
Loom Speeds (ppm)	<750	<750
Cotton Fly	Low	Low
Defects	Very Low	Very Low
Air-Jet Loom Compatible	Yes	Yes
Air-Jet Loom Performance	Excellent	Excellent



Since conditions and applications vary considerably in the use of a product, the customer and/or user should assure herself or himself that the product meets end customer requirements and is suitable for the intended end use. Coats accepts no liability for unsuitable or improper use or application of products.

Information provided above is based on current averages and should be taken only as indicative. Coats accepts no liability for the preciseness and correctness of the information provided.

Product information sheets are updated from time to time, please be sure you are referring to the most recent publication. Coats supports customers with advice on individual applications on request; if you have any questions or concerns, please contact us.

