

# EMBROIDERY THREAD & INTERLINING SOLUTIONS



CONNECTING. PIONEERING. TRUSTED.



# BRING THE BEST OUT OF YOUR DESIGNS, WITH EMBROIDERY SOLUTIONS FROM COATS.

## EMBROIDERY FROM COATS

Our world-renowned expertise can help you create higher-quality embroidered garments in record time.



Our embroidery expertise covers every part of every application – from threads to trims – so you can expect high-quality, ultra-reliable products.



We've honed our technical knowhow over decades in the market – helping hundreds of brands to bring the best out of their embroidery applications.



And if you need support at any time, our globally available experts will always be on hand to help. We even have our own Embroidery Solution Centres across the globe, which offer technical guidance on design improvement, thread choices and sewing techniques.



It all adds up to higher quality, and total peace of mind.

## EMBROIDERY SERVICE CENTRES

A key element of Coats Technical Services is our Embroidery Service Centre (ESC).

Our ESCs are fully equipped to assist our customers with technical input on their designs, which to help to

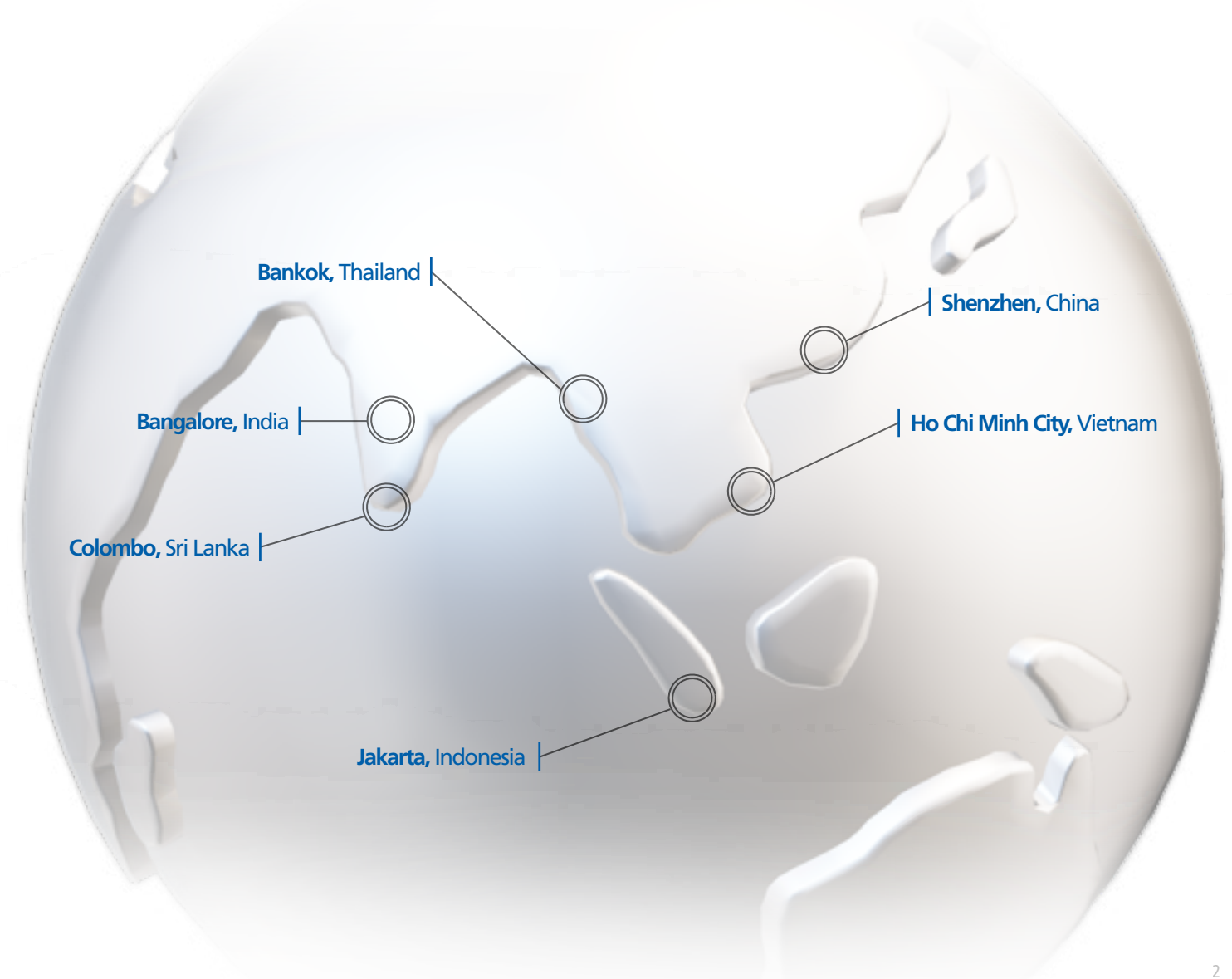
- Enhance quality
- Increase productivity
- Reduce cost (where practical)

## COATS EMBROIDERY SERVICE CENTRES (ESC)

Coats ESCs will take an embroidered garment; re-digitise, and sew out the new design beside the original design for your comparison.

They will report back with thread type and size, interlinings and needles used to create the new sew out.

Sometimes it is just a matter of adjusting stitches in the current digitised file or recommending a different backing or type of needle.





## COATS EMBROIDERY SOLUTIONS

---

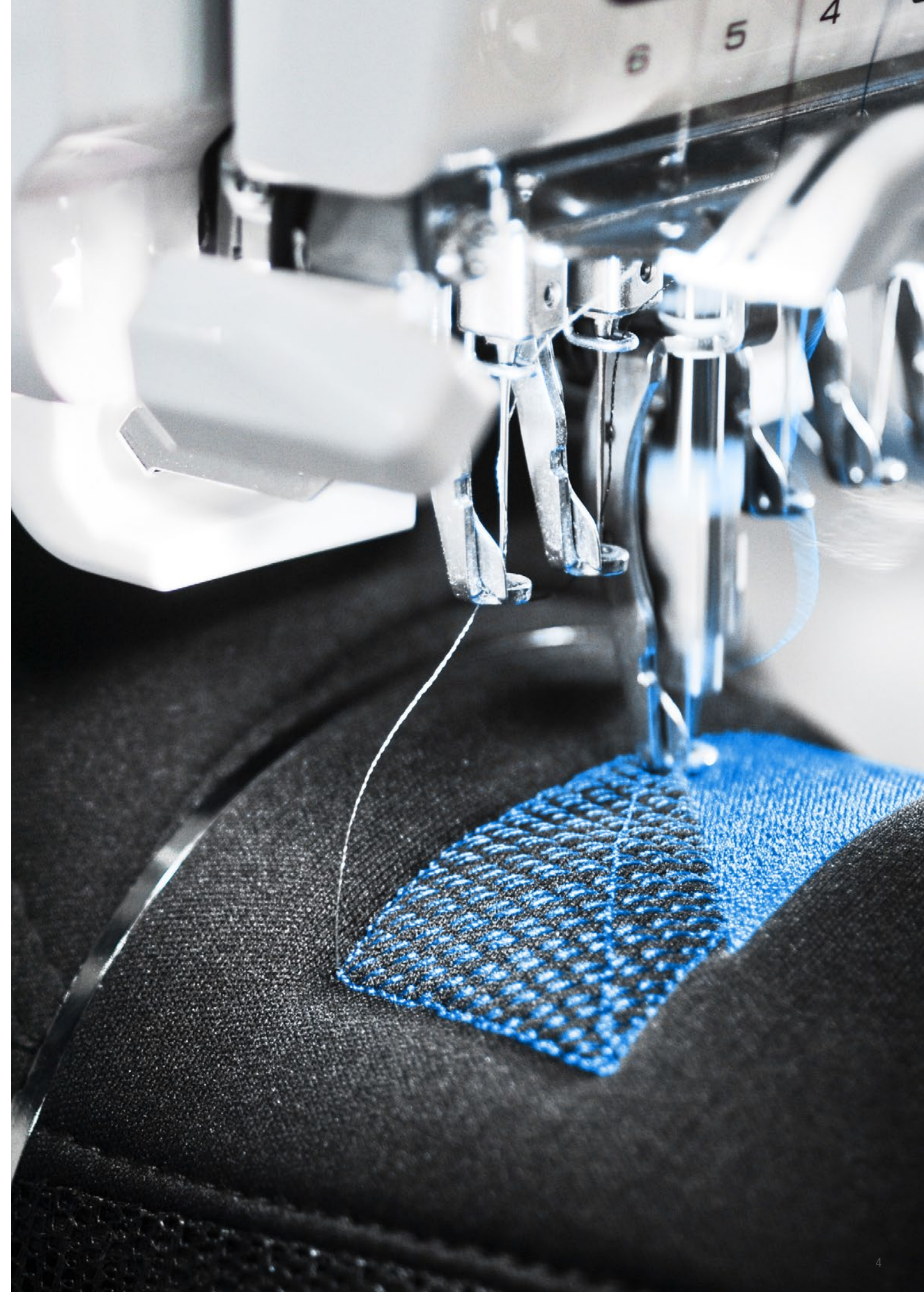
Any thread product that will sew successfully on lockstitch machines employing Stitch Types 301 and 304 will usually work for embroidery applications.

If apparel sewing threads are used for embroidery these need to be carefully tested to avoid garment issues.

The quality and quantity of lubricant used in these sewing threads is different to that of embroidery threads and helps to minimise the friction and abrasiveness while the machine is running at these higher speeds.

If apparel sewing threads were to be used for embroidery the lubricant can potentially migrate from the thread and stain the fabric. The lubricant used for embroidery threads is lower and more tightly controlled to allow high performance, outstanding quality, and to minimise the risk of stains.

For this reason, Coats provides an extensive, creative product range in embroidery and embellishment threads, available through the online ordering platform, Coats eComm.







## ECO-B

A key element of Coats Technical Eco-B is the latest addition to the sustainable product line. Empowered by the CiCLO® technology, it seeks to reduce synthetic fibre accumulation in landfills, microfiber pollution in the oceans and to effectively enable environmental microbes to break down the plastics just like with natural fibres. The break down starts only in conditions where biodegradation occurs.

Eco-B maintains the fibre integrity with proven durability and enhanced performance as that of virgin materials.



## SYLKO ECO-B

Coats Sylko Eco-B is a recycled trilobal polyester embroidery thread incorporating an additive from CiCLO® to reduce synthetic fibre accumulation in landfills and oceans. The

### WHY CHOOSE ECO-B?

**Sustainable:** Utilises proprietary technology to reduce plastic waste in landfills and plastic pollution in our oceans.

**Functional:** CiCLO fibres have the performance characteristics of plastic-based synthetic fibres but are enhanced for the earth’s ecosystems.

**Sensible:** The CiCLO fibres behave more like natural fibres if they end up in the environment.

**Versatile:** Suitable for a range of different apparel applications i.e. activewear, intimates, ladieswear, childrenswear, etc.

**Safe:** Meets STANDARD 100 BY OEKO- TEX.



technology creates biodegradable ‘spots’ in the polymer matrix, where naturally-occurring microbes in certain environments can break down the plastics just as they do with natural fibres.

Article	Ticket	Tex	Length	Average Strength cN	Elongation % Min-Max	Recommended Needle Size Metric
BEK3120	120	27	3000 m	1180	18 - 27	75 - 90

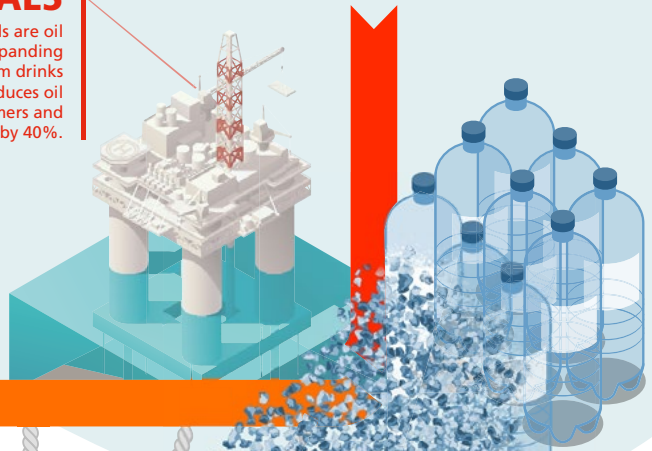
\*Needle size recommendations are a guide only and ultimately depend on the sewing application



UPSTREAM

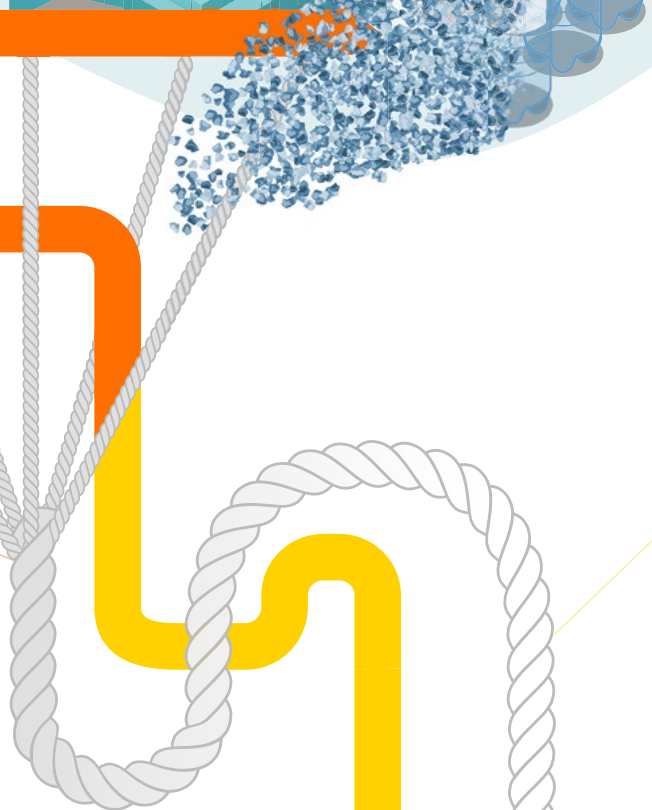
## RAW MATERIALS

Over 95% of our raw materials are oil based plastic fibres. We are expanding our use of recycled polyester from drinks bottles. Using recycled fibres reduces oil use, extends the life of the polymers and reduces CO2 emissions in the fibres by 40%.



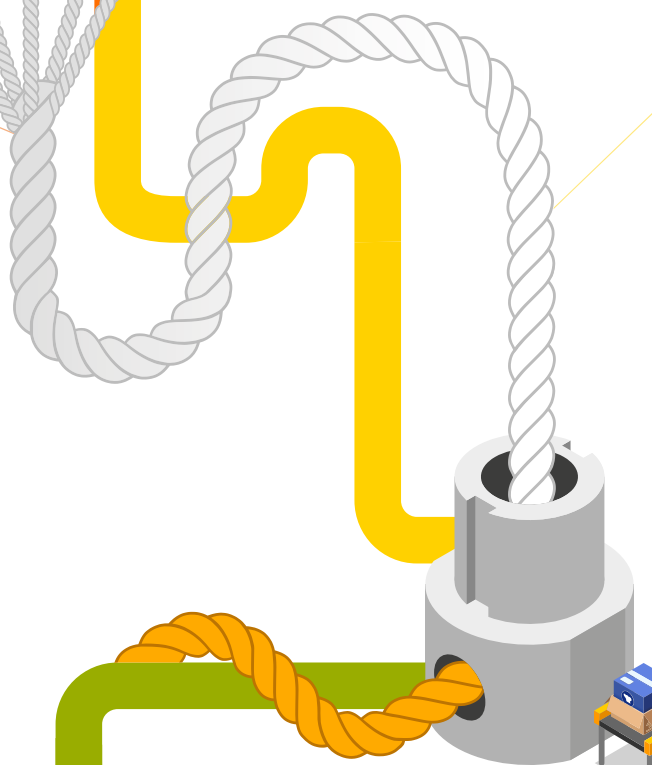
## SPINNING & TWISTING

This process converts the raw fibres into yarns and threads. The process uses a lot of electrical energy, accounting for about 30% of our total energy use. Good production planning and machine maintenance is key to minimising energy use.



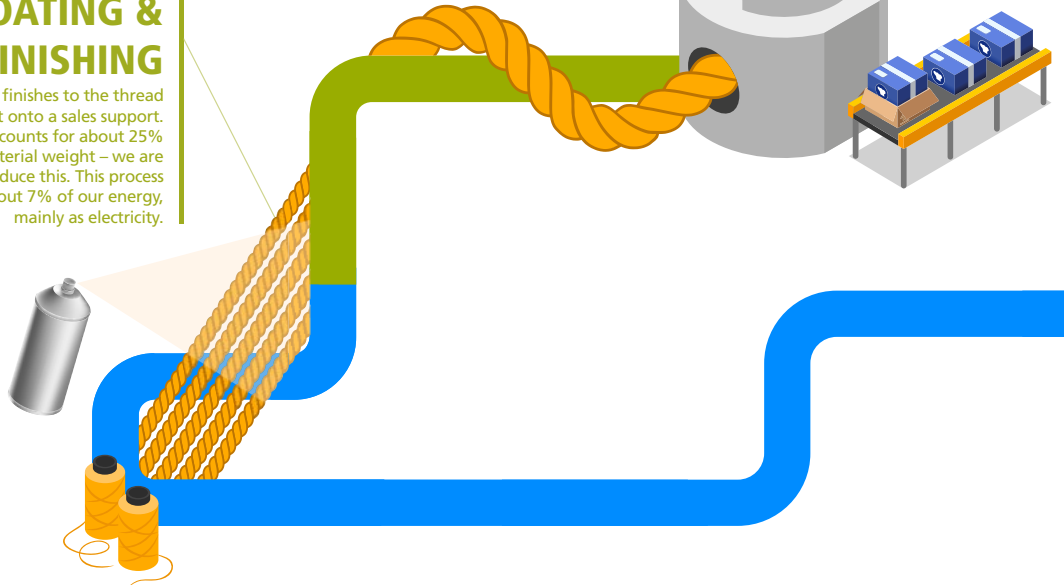
## DYEING

This process colours the thread. It is done with hot water and at high pressures. Overall the process accounts for around 60% of our energy use, both as electricity and fossil fuels, and 90% of our water use. Improving processes and using modern machinery is key to minimising energy and water use.



## COATING & FINISHING

Here we apply finishes to the thread and put it onto a sales support. Packaging accounts for about 25% of sales material weight – we are working to reduce this. This process uses about 7% of our energy, mainly as electricity.



## COATS SUSTAINABILITY

With the EcoVerde range from Coats you can create almost any sustainable garment to look, feel and perform like a traditionally-made product.

Coats EcoVerde is a range of threads, zips and trims made from 100% recycled premium polyester.

We've made the entire range – which includes everything from threads to zips and trims – available wherever you are in the world.

You shouldn't have to choose between your business priorities and the environment. That's why we're committed to sustainable business practices, and by 2024, all our premium quality polyester threads will be 100% recycled.

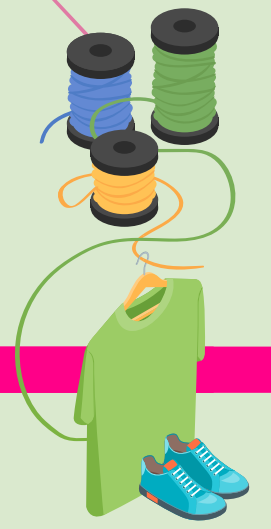
## DISTRIBUTION

Most Coats warehouses are located alongside production units. This is because many products are manufactured against customer orders. Distribution from warehouse to customers is normally done by third parties.



## SEWING

Thread is used largely to sew the seams that hold apparel and footwear products together. The volume of thread in the final product is normally very small, <3%. In some countries we have set up systems for collecting and reusing empty cones.



DOWNSTREAM





# SYLKO ECOVERDE



Coats Sylko EcoVerde is a 100% recycled trilobal polyester thread for machine embroidering. Sylko EcoVerde has superior lustre, durability

and smooth operation at the highest speeds, which makes it a popular choice among embroidery customers seeking performance.

Art/Tkt	Ticket	Tex	Length m	Strength cN	Elongation % Min – Max	Needle Size Metric
EV32180	180	18	3,000	747	20 - 28	65 - 75
EV32120	120	27	3,000	1,145	22 - 32	65 - 75

\*Needle size recommendations are a guide only and ultimately depend on the sewing application



# SYLKO ECOVERDE MATT



Coats Sylko EcoVerde Matt is a 100% recycled polyester corespun thread for machine embroidery. It has an attractive matt appearance and lower levels of lubrication for embroidering on a variety of apparel applications. The lubrication is carefully

adjusted to run perfectly on modern multi-direction embroidery machines at the high speeds they are engineered for. With Sylko Matt EcoVerde, your embroidery result is smoother and faster compared with staple spun polyester threads.

Art/Tkt	Ticket	Tex	Length m	Strength cN	Elongation % Min – Max	Needle Size Metric
EV30180	180	18	3,000	784	17 - 22	65 - 75
EC30120	120	24	3,000	1,186	17 - 26	65 - 75

\*Needle size recommendations are a guide only and ultimately depend on the sewing application



# SYLKO ECOVERDE MATT AS

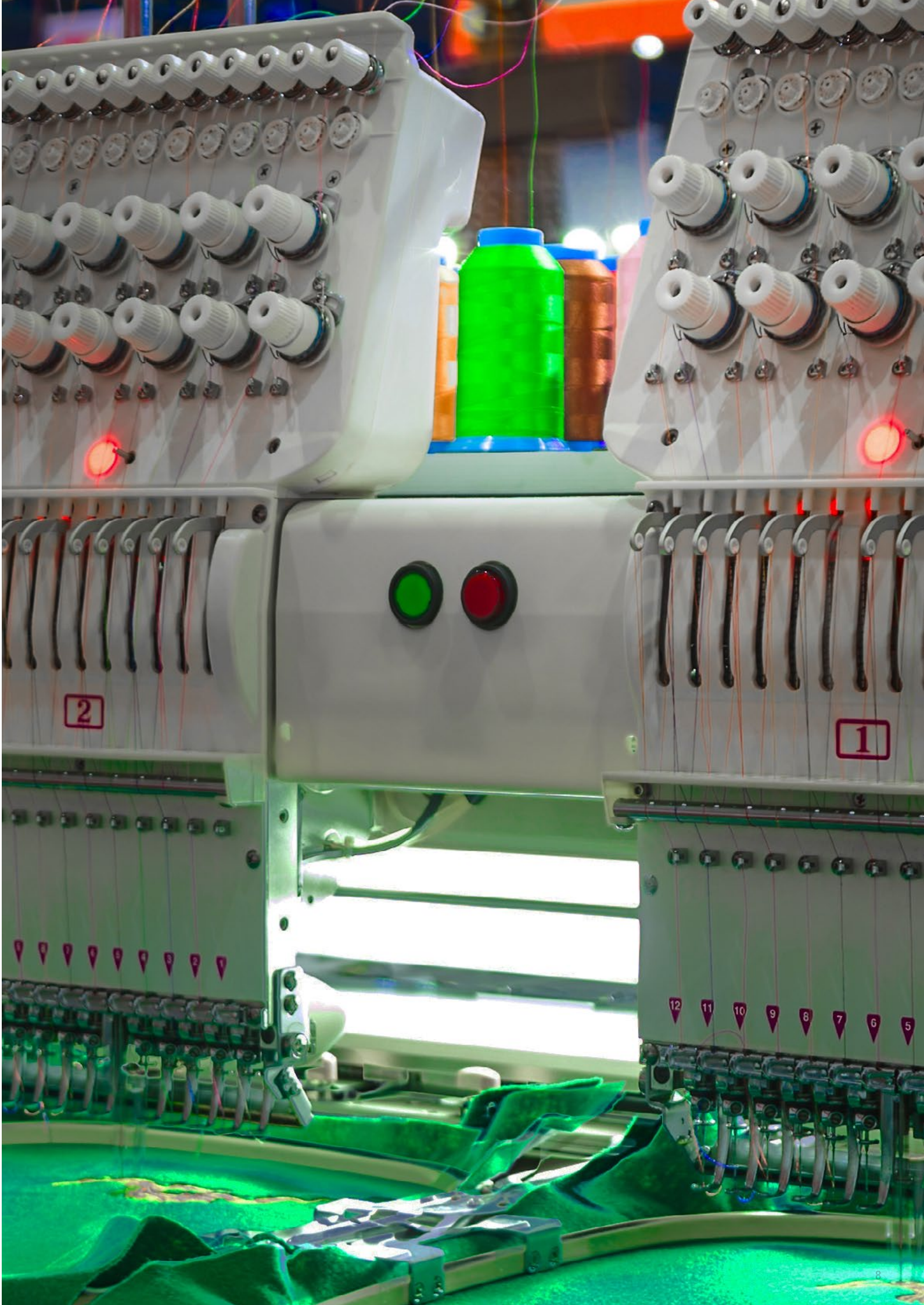


Sylko EcoVerde Matt AS provides a solution for oil sensitive materials such as C0 fabrics and has the potential to reduce lube migration. The lower dynamic friction values enhance the uniformity of the stitch formation providing neat,

well balanced seams on embroideries. The reduced frictional values also allow smoother thread pull off through the sewing machine helping to deliver longer lasting seams.

Art/Tkt	Ticket	Tex	Length m	Strength cN	Elongation % Min – Max	Needle Size Metric
EV35180	180	18	3,000	784	17 - 22	65 - 75
EV35120	120	27	3,000	1,186	17 - 26	65 - 75
EV35080	80	40	3,000	1,965	18 - 24	90 - 110

\*Needle size recommendations are a guide only and ultimately depend on the sewing application







## SYLKO ECOVERDE AS

Coat Sylko EcoVerde AS is a 100% recycled trilobal polyester thread with outstanding sewability. It provides a solution for oil-sensitive materials such as CO fabrics and has the potential to reduce lube migration. In drier atmospheric conditions the lower

static friction values of Sylko EcoVerde AS minimises the attraction of down towards the needle holes. A higher heat shield also allows for improved sewing performance on complex materials.

Art/Tkt	Ticket	Tex	Length m	Strength cN	Elongation % Min – Max	Needle Size Metric
EVAS180	180	18	3,000	747	20 - 28	65 - 75
EVAS120	120	27	3,000	1,145	22 - 32	65 - 75

\*Needle size recommendations are a guide only and ultimately depend on the sewing application



## SYLKO ECOVERDE METALLIC

Coats Sylko EcoVerde Metallic is a beautiful, metallised embroidery thread with a 100% recycled polyester core yarn. Its superior lustre and trouble-free operation has made it a popular choice amongst the world's best embroiderers seeking outstanding

performance and luxurious embellishment. Ideal for machine embroidery and decorative seams. It can also be used in the top spreader of coverseams for a metallic effect.

Article Ticket	Ticket	Tex	Length m	Strength cN	Elongation % Min - Max	Needle Size Metric	
EV87120	120	27	3,000	622	17 - 13	65 - 80	Shades with pure Silver coating
EV87120	120	27	3,000	655	22 - 25	65 - 80	Shades with Aluminum metallised coating

\*Needle size recommendations are a guide only and ultimately depend on the sewing application





# ECOREGEN AS

Coats EcoRegen AS is a range of 100% lyocell threads made from sustainably sourced wood pulp. It is an eco-friendly regenerated fibre which can be recycled and is fully biodegradable and compostable due to its cellulosic origin. With the highest dry and wet strength amongst all the cellulosic fibres , it delivers superior elongation and comfort across a wide range of apparel sewing and embroidery applications.

EcoRegen AS provides a solution for oil sensitive materials such as C0 fabrics and has the potential to reduce lube migration.

For added peace of mind, EcoRegen is FSC and Canopy compliant.

Art/Tkt	Ticket	Tex	Length m	Strength cN	Elongation % Min – Max	Needle Size Metric
ERA5060	60	30	5,000	830	8 - 14	75 - 90
ERA5050	50	35	5,000	1,029	8 - 14	80 - 90

\*Needle size recommendations are a guide only and ultimately depend on the sewing application





# COATS EMBROIDERY THREADS

Create beautiful logos and decorative seams on clothing and accessories that are subject to wear and tear or frequent washing. Our

extensive, creative product range in embroidery and embellishment threads meets the most imaginative expectations. **Standard Brands:**



## LUCENCE

Coats Lucence is an embroidery thread with a special ‘Glow in the dark’ effect which is ideal for making children’s clothing more exciting, or for adding that extra special decorative feature.

The thread is ‘charged’ in sunlight or in artificial light (to a lesser degree) and emits a luminous glow quality when viewed in the dark.

Art/Tkt	Ticket	Tex	Length m	Strength cN	Elongation % Min – Max	Needle Size Metric
4601120	120	27	1,500	600	40 – 60	75 – 90

\*Needle size recommendations are a guide only and ultimately depend on the sewing application



## SYLKO RD

A trilobal polyester thread especially engineered for embroidery applications on nightwear. It has a unique lubrication which results in high productivity

and conforms to U.S. Legislation CFR1615 and BS EN 14878:2007 (Nightwear Safety Regulations).

Art/Tkt	Ticket	Tex	Length m	Strength cN	Elongation % Min – Max	Needle Size Metric
3290120	120	27	3,000	1,140	20 – 28	65 – 75

Also available as a sustainable product in recycled trilobal polyester  
\*Needle size recommendations are a guide only and ultimately depend on the sewing application  
\*For put-up 2000m, please order 3292 120



## SYLKO PEARL

Coats Sylko Pearl is a highly engineered composite thread for machine embroidery. It brings a new sensation to the perception of

colours and gives a beautiful pearl effect on embroidery applications.

Art/Tkt	Ticket	Tex	Length m	Strength cN	Elongation % Min – Max	Needle Size Metric
73P0110	110	21	3,000	560	20 – 33	65 – 80

\*Needle size recommendations are a guide only and ultimately depend on the sewing application



## GRAL LL

Coats Gral LL is a continuous filament polyester thread made from pre-stablised high tenacity polyester and is the thread of choice for multiple

end-uses. The soft finish with superior low friction lubrication reduces the effects of needle heat and abrasion.

Art/Tkt	Ticket	Tex	Length m	Strength cN	Elongation % Min – Max	Needle Size Metric
339L120	120	21	5,000	1,420	16 – 22	65 – 75

Also available as a sustainable product in recycled polyester  
\*Needle size recommendations are a guide only and ultimately depend on the sewing application





# SIGNAL SOFT

Coats Signal Soft thread is a high-tech retro-reflective sewing and embroidery thread for fashion applications in apparel sewing. When illuminated by a light source, it helps to enhance the visibility at night-time or in difficult weather conditions and adds that extra special decorative

feature. It is a high-tech thread with excellent strength and durability. The finer ticket size and the optimal softness and pliability properties allow decorative embroidery embellishments on garment fabrics.

Art/Tkt	Ticket	Tex	Length m	Strength cN	Elongation % Min – Max	Needle Size Metric
SEV5040	40	70	500	1090	15 - 25	75 - 80

The day colour is silver and when exposed to light the reflected colour is white.

\* Needle size recommendations are a guide only and ultimately depend on the sewing application



# EPIC MULTICOLOUR

Coats Epic Multicolour is a high performance 100% polyester corespun thread that has been injection dyed with up to 6 different colours to give an

attractive, varied multicolour effect on the thread. Use Epic Multicolour thread for eye-catching stitching effects on key wardrobe essentials.

Art/Tkt	Ticket	Tex	Strength cN	Elongation % Min – Max	Needle Size Metric
2MC5120	120	24	1,190	17 – 22	65 – 75

Also available as a sustainable product in recycled polyester  
For other counts please contact your local representative

\* Needle size recommendations are a guide only and ultimately depend on the sewing application



# GRAL MULTICOLOUR

Coats Gral Multicolour is a continuous filament polyester thread with an especially smooth surface and clean seam appearance. Coats Gral Multicolour has been injection dyed with up to 6 different colours to give an attractive, varied

multicolour effect on the thread. From subtle tone-in-tone to rainbow contrast colours, Gral Multicolour gives that extra special look and has good abrasion resistance properties.

Art/Tkt	Ticket	Tex	Length m	Strength cN	Elongation % Min – Max	Needle Size Metric
1MCF120	120	21	15,000	1,420	16 – 22	75 – 90

Also available as a sustainable product in recycled polyester  
For other counts please contact your local representative

\* Needle size recommendations are a guide only and ultimately depend on the sewing application



COATS *signal soft* with Flash light





EMBROIDERY FRONT

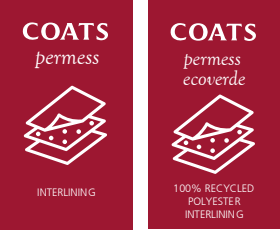
BACKSIDE WITHOUT OTB

BACKSIDE WITH OTB

## COATS PERMESS EMBROIDERY INTERLININGS

Coats and Permess have partnered to provide a comprehensive co-branded variety of interlinings to the garment industry. Coats’ sales, distribution and technical service capabilities across the world are a perfect match to the Permess’ manufacturing spread, expertise and technology. Together we offer added value to the garment industry through:

- Consistent quality across the globe
- Quick technical support and sampling
- Fast and reliable lead-times based on local stocks at Coats’ locations
- Innovative products



### PRODUCT RANGE OVER-THE-BACK (OTB)

Designed for maximum wearing comfort, this range of very soft adhesive interlinings fuse onto the backside of an embroidery to protect the skin from coarse threads.

Durable and Öko-Tex Standard 100, class I certified, they are ideal for most embroidery applications in newborn garments, childrenswear, and sportswear.

P019048 is recommended for lightweight fabrics around 180gsm, whilst P021450 can be used as an alternative for heavier fabrics.

S021450 is a part of our Coats Permess Ecoverde range made of premium quality 100% recycled polyester interlinings, that is certified according to Global Recycled Standard (GRS). Our sustainable recycled polyester interlinings fulfil high quality standards and deliver the same performance as virgin polyester interlinings.

Art/Tkt	Type	Substrate	Construction	Weight approx. g/m²	Width cm	Length m	Available colours	Fusing conditions		
								Temperature	Pressure	Time
P019048	Circular knit fusible multidirectional stretch	100% polyester	Circular knit	32	150	100	050 (white) 053 (ecru) 950 (black)	110-140	3-4	10-15
P021450	Circular knit fusible multidirectional stretch	100% polyester	Circular knit	44	150	100	050 (white) 053 (ecru) 950 (black)	130-140	3-4	10-15
S021450	Circular knit fusible multidirectional stretch	100% recycled polyester / post-consumer recycled PET	Circular knit	44	150	100	050 (white) 053 (ecru) 950 (black)	130-140	3-4	10-15

#### CARE INSTRUCTIONS







# PRODUCT RANGE

## WATER SOLUBLE

Water-soluble nonwovens and film are used as temporary stabilisers when stitching an embroidery design. Our selection of water-soluble stabilisers dissolves in 20°C water within 10-30 seconds, leaving embroidery soft and comfortable against the skin. Perfectly formulated to stabilise fabrics, while keeping uniformity and shape of the embroidery.

Nonwovens are optimal for delicate fabrics where tear-away stabilisers could lead to a damage. They can be used to make mesh-like fabrics, embroidery embellishment or freestanding laces.

Water-soluble film can be used on top of very flexible and bulky fabrics, such as terry cloth or knitwear, to prevent the sinking of stitches and embroidery details into the pile.

Art/Tkt	Type	Substrate	Construction	Weight approx. g/m²	Width cm	Length m	Available colours
PEWS235	Nonwoven, 20°C water-soluble	100% polyvinyl alcohol	Thermo bonded	35	150	200	050 (white)
PEWS260	Nonwoven, 20°C water-soluble	100% polyvinyl alcohol	Thermo bonded	60	150	200	050 (white)
PEWF235	Film, 20°C water-soluble	100% polyvinyl alcohol	Film	35	100	200	000 (transparent)







## PRODUCT RANGE TEAR AWAY

Tear-away nonwovens are also used as a temporary stabilisers when stitching an embroidery design. It can be completely removed by gently tearing the backing away from the embroidery after the embroidery process. After removing the backing, it creates a smoother, more comfortable feel to the skin.

Tear-away is especially useful for fabrics that need some stabilisation during embroidery process, but do not need support after the embroidery is finished.

Tear-away nonwovens can be used for various fabrics. In case of lightweight thin fabrics, two layers are recommended.

Our tear-away nonwovens tear in all directions. Polyester viscose blend provides softness, durability and resiliency to the embroidery design.

Art/Tkt	Type	Substrate	Construction	Weight approx. g/m <sup>2</sup>	Width cm	Length m	Available colours
PEET040	Nonwoven, Easy tear-away in all directions	65% viscose / 35% polyester	Chemically bonded	40	150	100	050 (white) 950 (black)
PEET055	Nonwoven, Easy tear-away in all directions	50% viscose / 50% polyester	Chemically bonded	55	150	100	050 (white) 950 (black)