

COATS
signal hd



CONTINUOUS
FILAMENT NYLON /
GLASS

Coats® Signal™ HD

Coats Signal HD is a retro-reflective thread for footwear embroidery. When illuminated by a light source, it helps to enhance the visibility at night-time or in difficult weather conditions and adds that extra special decorative feature.

*Please note Signal HD is primarily for decorative retro reflective applications and is not for safety wear where strict norms for reflectivity values are specified.

WHY CHOOSE SIGNAL HD ?

- Coats Signal HD is a high-tech thread that combines the tenacity of a nylon filament cover with a retro-reflective core with excellent strength and durability
- Bonding technology that safeguards against ply untwisting
- Retains maximum reflectivity after sewing
- The daytime colour is silver and when illuminated by light the reflected colour is white
- Enhanced retro-reflectivity visibility when illuminated by a light source
- Certified to Öko-Tex Standard 100, class II

MAIN USES:

- Signal HD is intended for use in embroidery sewing on footwear materials



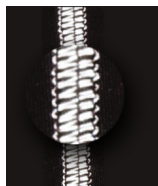
Coats Signal HD

PRODUCT RANGE

| Art/tkt | Ticket No. (Nm) | Ply | Average Strength CN | Elongation % |
|----------|-----------------|-----|---------------------|--------------|
| SFV5/025 | 25 | 3 | 1,300 | 16 |

STANDARD SHADE

SILVR
Silver

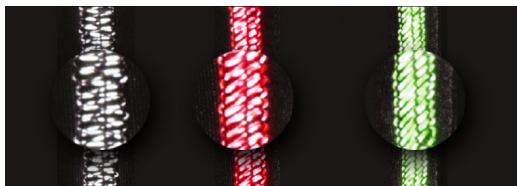


POPULAR COLOURS

Black

315WY
Neon Pink

316WY
Neon Green



* Signal HD Pop thread combines a dyed Nylon component with silver reflective material. The reflected colour is always white.



COATS
signal hd
SFV5
Tkt 025
500m
Tex 105
TRIS 20918831
Col. SILVR

THERMAL PROPERTIES

Melting point 250°C

CHEMICAL PROPERTIES

| | |
|---|---|
| Mineral acids: | Decomposed by strong mineral acids but resistant to weak acids |
| Alkalis: | Essentially unaffected by weak alkalis, but less resistant to stronger alkalis, especially at higher temperatures |
| Organic solvents: | Generally unaffected |
| Bleaching: | Unaffected, deterioration dependant on conditions |
| Insects / microorganisms (mildew, rot): | Unaffected |
| Moisture regain: | Approximately 4.5% |
| Moisture regain: | 0.4% |

FASTNESS PROPERTIES

| | | |
|---------------------------|----------------------|-------------|
| Water Fastness | (ISO 105 E01) | Grade 4 |
| Rub Fastness | (ISO 105 X12) | Grade 4 - 5 |
| Artificial Light Fastness | (SAE J1885 40 kJ/m2) | Grade 4 |

These fastness grades represent minimum performance levels and, in practice, the majority of shades will exceed these levels.



CONTINUOUS
FILAMENT NYLON /
GLASS



Coats Signal HD

EXPERT REAL WORLD SUPPORT

The final cost of any thread also includes hidden costs, fuelled by the methods and tools applied to it. Our experts know exactly how to reduce those costs, save time and increase productivity.



One to One Visits

There's no need to come to us, our experts will travel to your site. In person, online or via the phone, our trained consultants deal with the kind of issues any busy factory may face, providing a solution for today and a blueprint for future efficiency.



Training and Presentations

From thread selection to stitch formation, the use of colour to solutions for common production issues, we take the learning gathered through years of hands on experience and present it in the form of high impact seminars, workshops and presentations.



Embroidery Service Centre

Our Embroidery Service Centre makes embroidering a design much easier, increasing productivity at the same time as enhancing the design itself. Email the design and any problematic issues to us and our technicians will email the improved design right back.



Innovation Hub

Collaborate directly with expert R&D technologists at our Innovation Hub to create pioneering and tailored solutions for products ranging from Performance Materials to Apparel and Footwear. Equipped with state-of-the-art technology, we quickly turn ideas into prototype designs ready for manufacturing.

To drive your hidden costs down, talk to Coats. From thread audits in pre-production to the latest technical bulletins, we'll provide support that achieves measurable results.

For more information, talk to your Coats representative today or visit coats.com

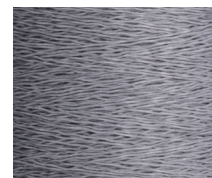
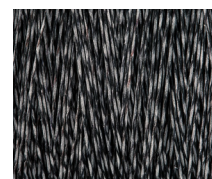
OTHER PRODUCTS IN THE SIGNAL RANGE

To complement the Signal range, we also have a selection of specialist Signal threads. Each of these combines the superior properties of the Signal product with additional benefits specific to the end use.

| Product Name | Description |
|--------------|--|
| Signal | Retro reflective sewing and embroidery thread which, when illuminated by a light source, helps to enhance the visibility of apparel in the dark. |



CONTINUOUS
FILAMENT NYLON /
GLASS



Since conditions and applications vary considerably in the use of a product, the customer and/or user should assure themselves that the product meets end customer requirements and is suitable for the intended end use. Coats accepts no liability for unsuitable or improper use or application of products. Information provided is based on current averages and should be taken only as indicative. Coats will take no responsibility or liability for any machine damage caused by the use of this product and it is important that the factory is fully informed of the preventative care and usage of Signal HD. Coats accepts no liability for the preciseness and correctness of the information provided. Product information sheets are updated for time to time, please be sure you are referring to the most recent publication. Coats supports customers with advice on individual applications on request; if you have any questions or concerns, please contact us. © Copyright reserved 2018