

COATS
prolene
filtration



FILTRATION YARNS

Coats® Prolene™ Filtration

Coats Prolene Filtration is a range of yarns specifically engineered for the manufacturing of filtration products, with a range that features yarns for use in acid, alkali, solvent or heat resistant applications.

WHY CHOOSE PROLENE FILTRATION?

- Specially developed to give the optimum performance in their targeted applications.
- ELF (Extremely Low Foam) Yarns- The lowest foaming polypropylene media on the market. This technology closely resembles a pre-washed media.
- Anti-microbial media- Coats has extensive knowledge and performance history with unique anti-microbial solutions.
- Innovative blends- Incorporating different media within the yarn structure for increased performance or better economics.

MAIN USES

- Filters
- Industrial bags
- Wound cartridges

FIBRES AND YARN CONSTRUCTION

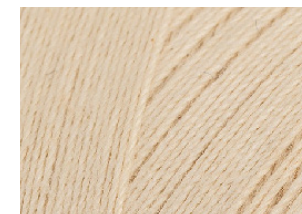
FIBRES: Natural, man-made and synthetic fibres

DREF SPUN YARNS: Increased loftiness, improved yields and the ability to incorporate a core for improved winding performance.

OPEN-END YARNS: For unique winding solutions that require increased strength in winding and durability in back-flushing applications

COUNT RANGE: 2.0 Ne to .5 Ne and 3.39 Nm to .847 Nm

PACKAGE TYPES: 8-14 pounds packed for economical transport domestic or sea-freight



Coats Prolene Filtration

YARN TYPES

Agion	<ul style="list-style-type: none"> • Anti-microbial Polypropylene fibre
FDA	<ul style="list-style-type: none"> • Approved for food contact
Ryton	<ul style="list-style-type: none"> • Polymers containing Polyphenylene Sulfide (for high temperatures of 200°C and chemical resistance) • Non oxidizing, good for high PH applications even at elevated temperatures • Chemically resistant with many acids, salt solutions and automotive fluids • Max temp 425°F/ XXX °C • Similar to bleached cotton, but with more coarse fibre and less absorbency features
Rayon	<ul style="list-style-type: none"> • Smooth similar to cotton • Meets FDA standards for distilled water, beverages, vegetable oils, petroleum, fatty acids, and alcohols
Filbrillated Polyester	<ul style="list-style-type: none"> • Discontinuous longitudinal cuts (low moisture absorption) • Great abrasion resistance • Economical • Good for liquids and electronics • Used in fine sediments (sand, ect) • Helps with adhesion
Bleached Cotton	<ul style="list-style-type: none"> • Meets FDA standards for distilled water, beverages, vegetable oils, petroleum, fatty acids, and alcohols
Combo	<ul style="list-style-type: none"> • 2 ends of bleached cotton and 2 ends of natural cotton • Bleached outer and natural core combined (bleaching removes the oil in the fibres) • Meets FDA requirements for the potable liquids, vegetable oils, beverages, organic solvents, water, dilute acids, petroleum oils • Has 1 more end of cotton than Industrial Combo
Industrial Combo	<ul style="list-style-type: none"> • 3 ends of natural and 1 end of bleached cotton • 1 less end of cotton than the regular combo
String wound	<ul style="list-style-type: none"> • Over a core – creates zig/zag path • Holds more dirt"

PRODUCT RANGE

Product code	Description	Construction	Count Hk/lb	Ply	Skein Break lbs
PR30375	.63/1 NATURAL COTTON	Dref	.63/1	1	85
PR30325	.63/1 FDA BLEACH COTTON	Dref	.63/1	1	150
PR30321	.63/1 COMBO BLEACHED COTTON	Dref	.63/1	1	160
PR30319	.63/1 INDUSTRIAL COMBO COTTON	Dref	.63/1	1	130
PR30327	.60/1 NYLON	Dref	.60/1	1	140
PR30340	.63/1 RAYON	Dref	.63/1	1	175
PR30365	.55/1 POLYESTER	Dref	.55/1	1	250
PR30305	.63/1 FDA PP	Dref	.63/1	1	200
PR30315	.63/1 ECO POLYPROPYLENE	Dref	.63/1	1	220
PR30308	.63/1 FDA POLY AGION ANTI MICROBIAL	Dref	.63/1	1	200



FILTRATION YARNS

Since conditions and applications vary considerably in the use of a product, the customer and/or user should assure themselves that the product meets end customer requirements and is suitable for the intended end use. Coats accepts no liability for unsuitable or improper use or application of products. Information provided is based on current averages and should be taken only as indicative. Coats accepts no liability for the preciseness and correctness of the information provided. Product information sheets are updated for time to time, please be sure you are referring to the most recent publication. Coats supports customers with advice on individual applications on request; if you have any questions or concerns, please contact us. © Copyright reserved 2021



Coats Prolene Filtration

EXPERT REAL WORLD SUPPORT

The final cost of any product also includes hidden costs, fuelled by the methods and tools applied to it. Our experts know exactly how to reduce those costs, save time and increase productivity.



One to One Visits

There's no need to come to us, our experts will travel to your site. In person, online or via the phone, our trained consultants deal with the kind of issues any busy factory may face, providing a solution for today and a blueprint for future efficiency.



Training and Presentations

From product selection to solutions for common production issues, we take the learning gathered through years of hands on experience and present it in the form of high impact seminars, workshops and presentations.



Innovation Hub

Collaborate directly with expert R&D technologists at our Innovation Hub to create pioneering and tailored solutions for products ranging from Performance Materials to Apparel and Footwear. Equipped with state-of-the-art technical, we quickly turn ideas into prototype designs ready for manufacturing.

To drive your hidden costs down, talk to Coats. From thread audits in pre-production to the latest technical bulletins, we'll provide support that achieves measurable results.

For more information, talk to your Coats representative today or visit www.coats.com/prolene-filtration



Since conditions and applications vary considerably in the use of a product, the customer and/or user should assure themselves that the product meets end customer requirements and is suitable for the intended end use. Coats accepts no liability for unsuitable or improper use or application of products. Information provided is based on current averages and should be taken only as indicative. Coats accepts no liability for the preciseness and correctness of the information provided. Product information sheets are updated for time to time, please be sure you are referring to the most recent publication. Coats supports customers with advice on individual applications on request; if you have any questions or concerns, please contact us. © Copyright reserved 2021

