

QLEX®



Permess

[www.coats.com](http://www.coats.com)



4e edition

Photography Merlijn Michon and Lex Scheffel

Printed by Repro Amsterdam

QleXX technique and material by Permess International

Design Lex Scheffel

Samples by QleXX atelier

QleXX publishing 2018 ©

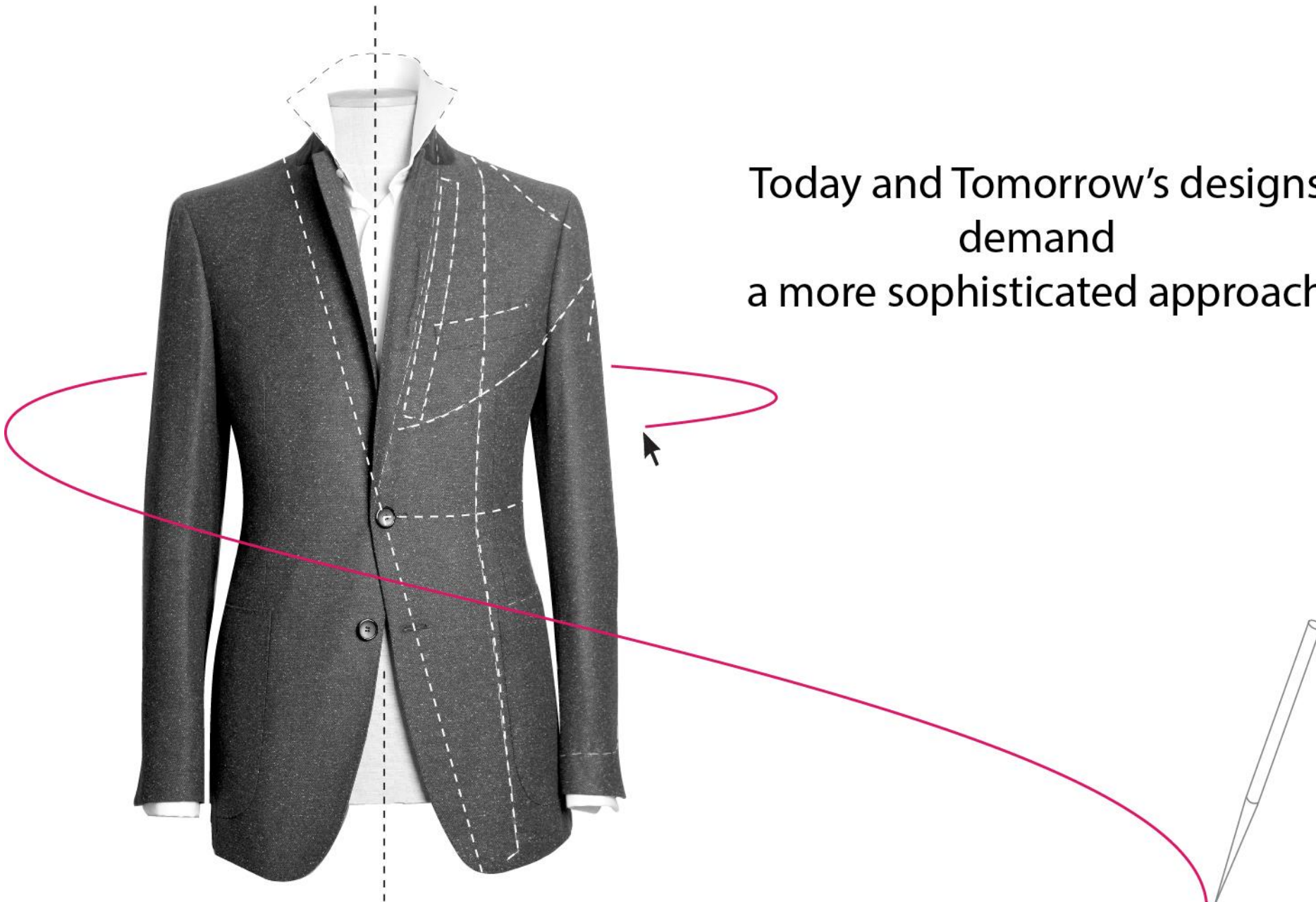
Printed in the Netherlands

All rights reserved



The world of **QLEXXX<sup>®</sup>**

Today and Tomorrow's designs  
demand  
a more sophisticated approach.



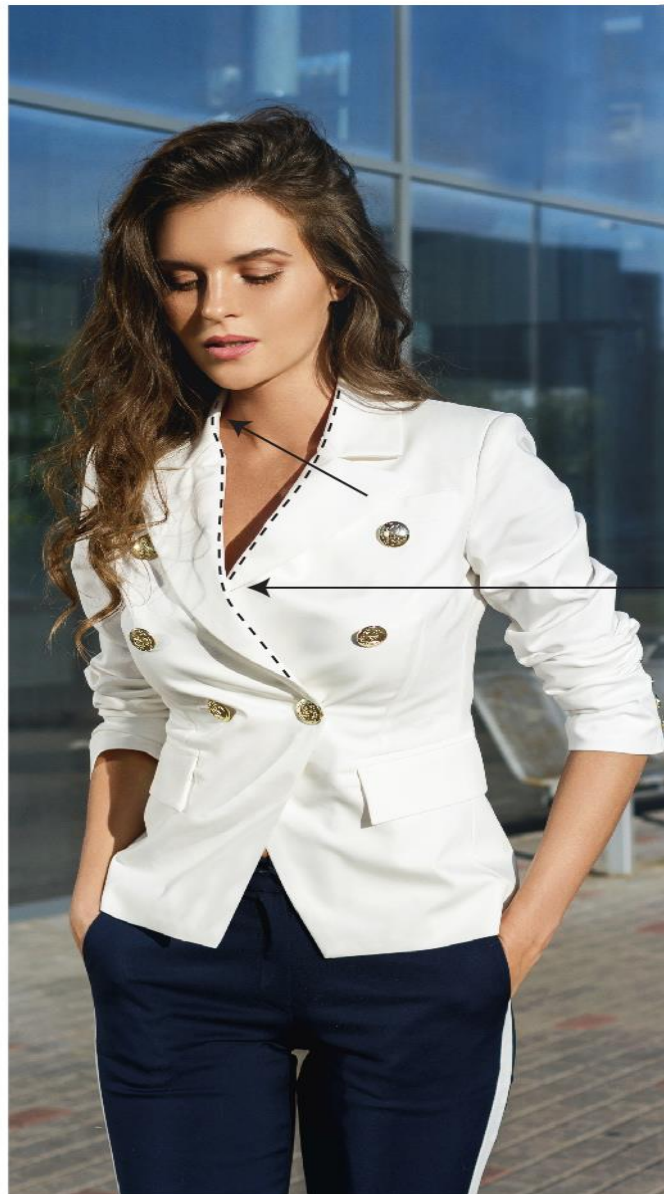
A new technology in fashion industry **QLEX®**





- 1 Unstable neckline
- 2 Lapels are not straight
- 3 Armhole is unstable
- 4 Chest fit is bad





These examples  
show the exact  
problem

The length of the lapel  
becomes too long

A perfect pattern  
combined with QleXX  
is the solution

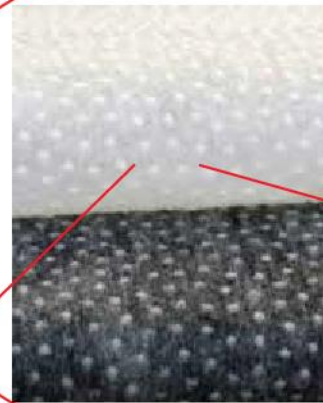
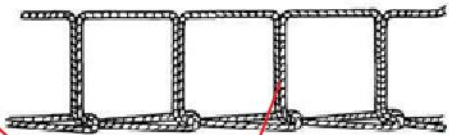
QLEXX®





In men's  
blazers and suits  
we discovered  
the same  
imperfections

Chain stitched QLEX<sup>®</sup>

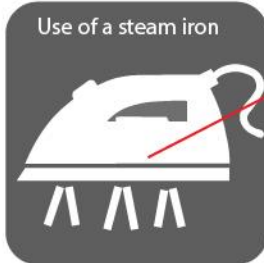


Perfect dots

Unique interlining

The use of a steam iron on QleXX, ensures the best results.

Use of a steam iron

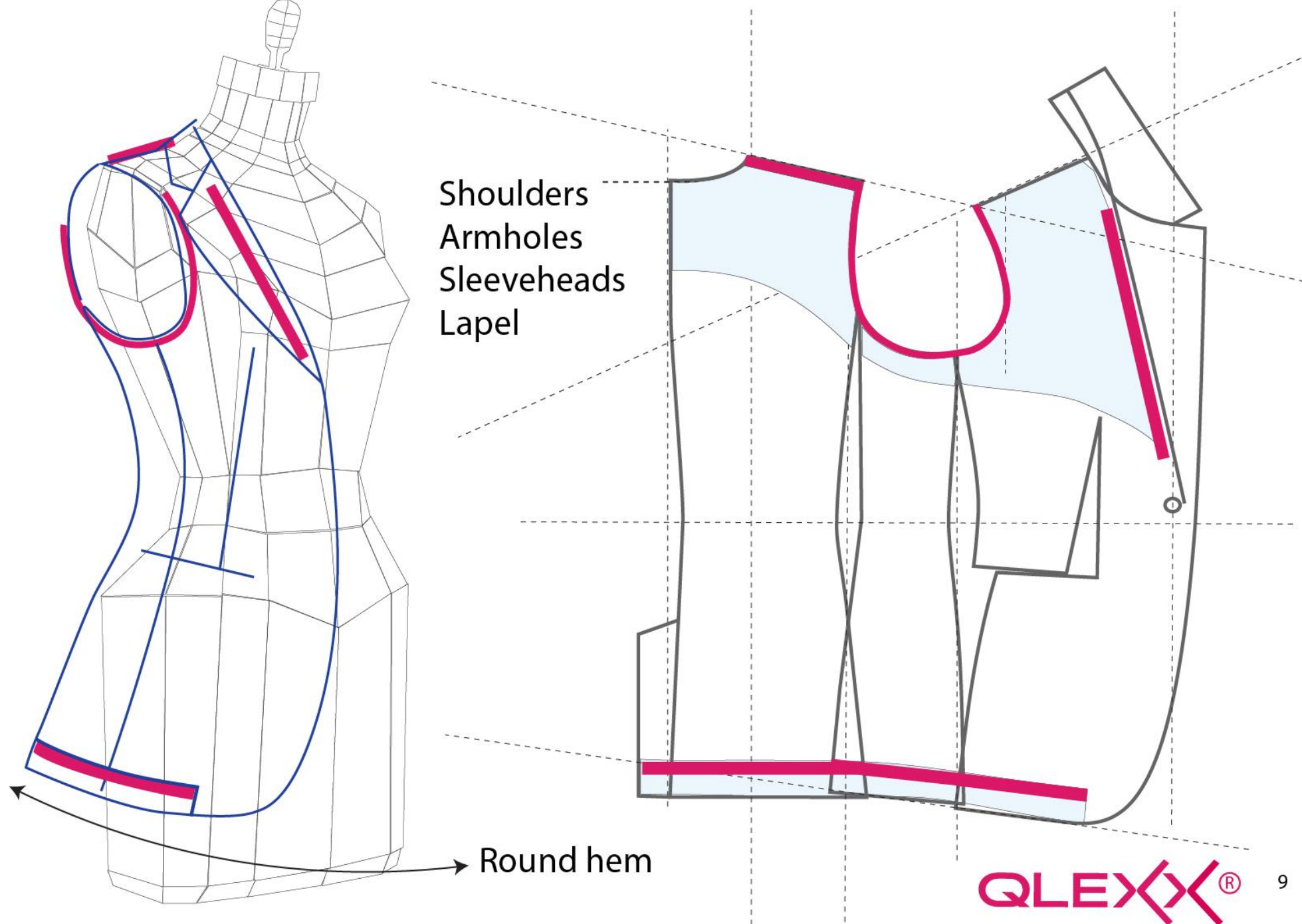


Tests with fabric, interlining and QleXX are recommended before bulk production.

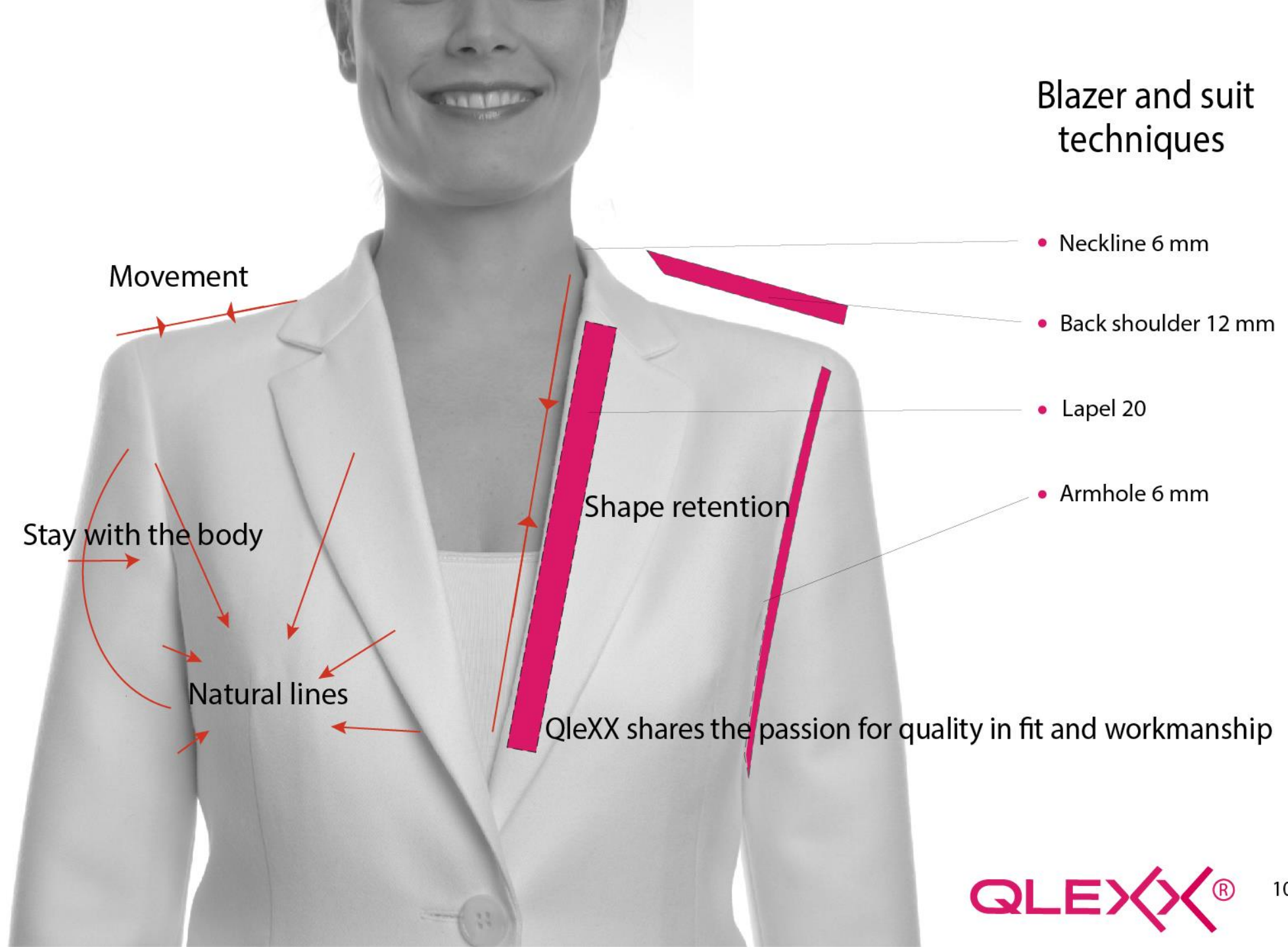
1-3% shrinkage performance

QLEX<sup>®</sup>



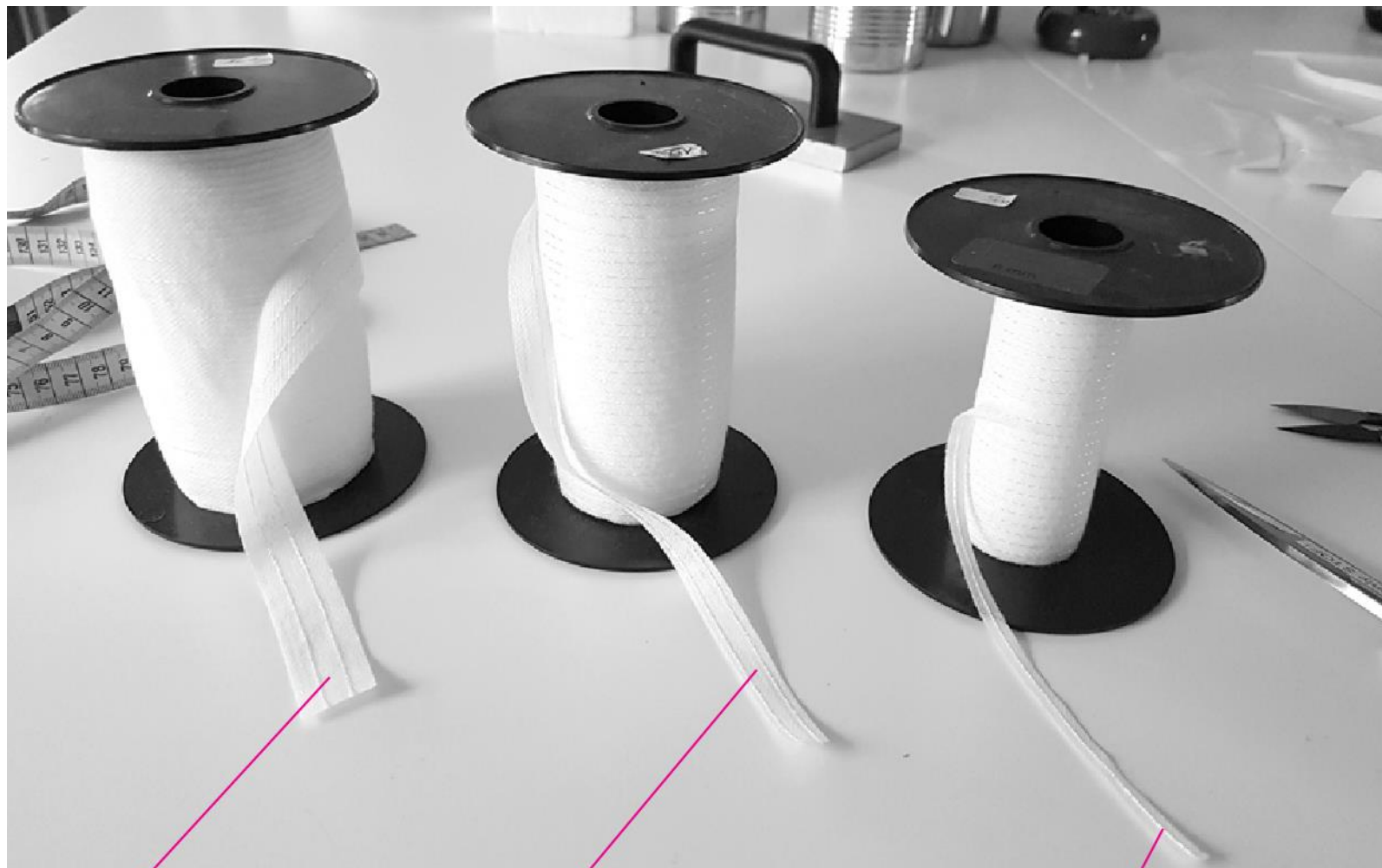


## Blazer and suit techniques









## 3 TYPES 3 GOALS

- Great fit
- Strong look
- Shape retention

20 mm

Lapel  
Round hem

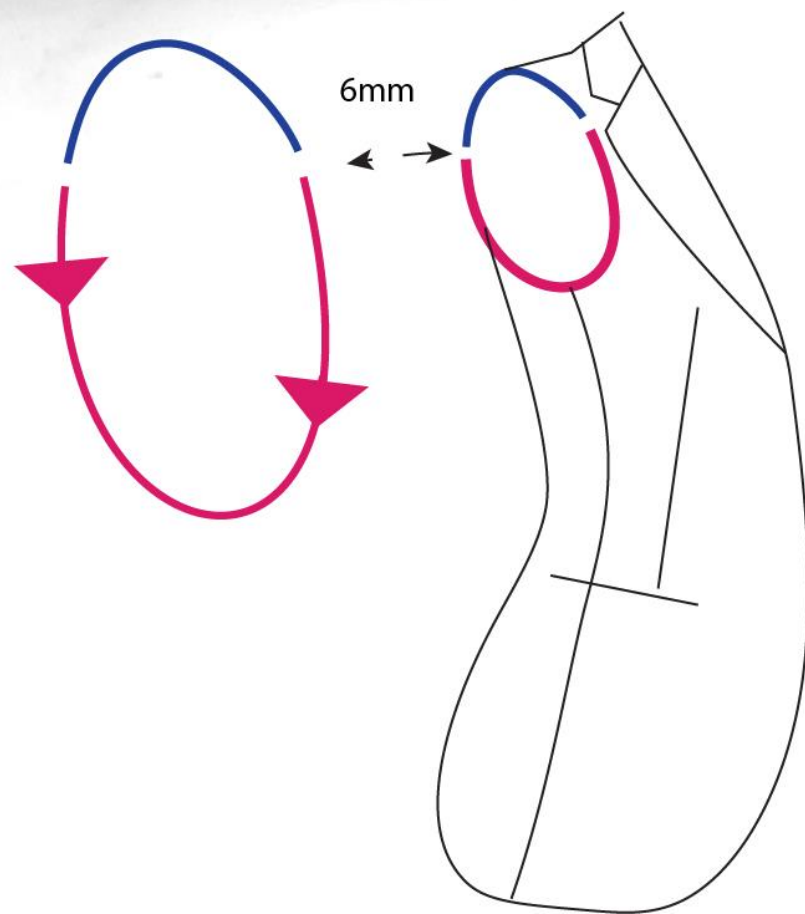
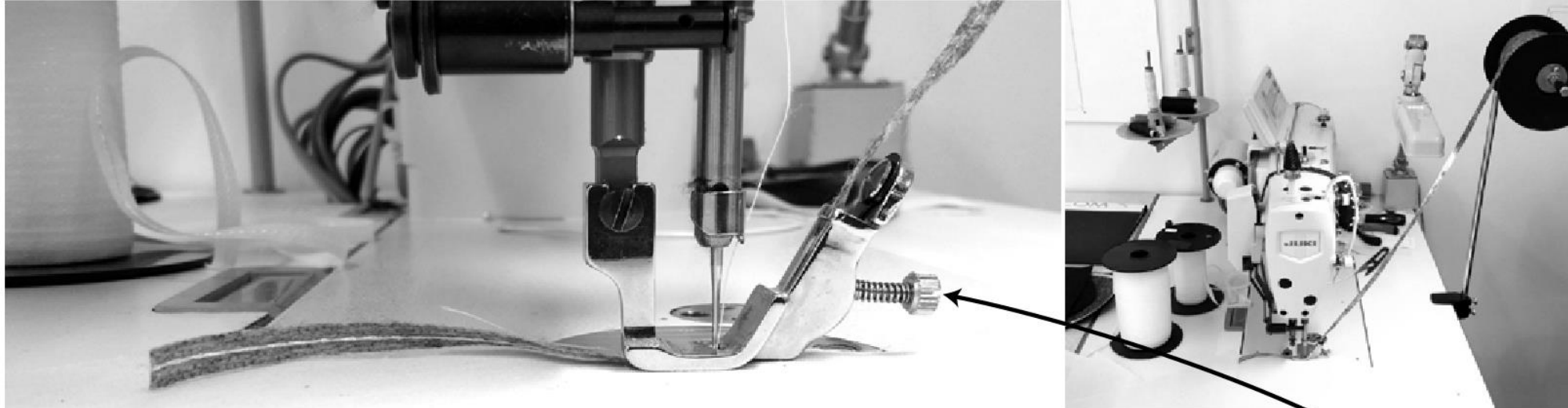
12 mm

Back shoulder seams  
Pockets in trousers and skirts  
Round hem

6 mm

Armhole  
Neckline  
Sleevehead  
Collar





First sew and then iron

1



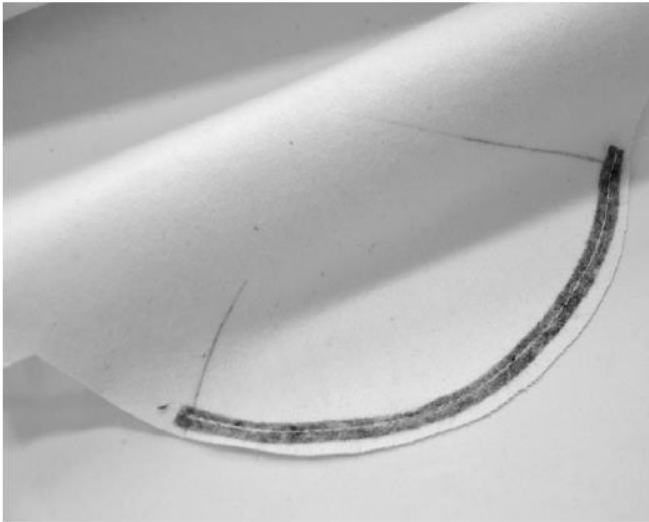
2



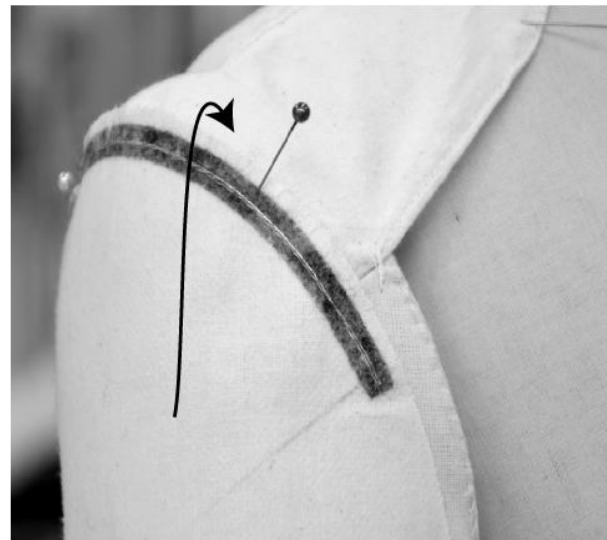
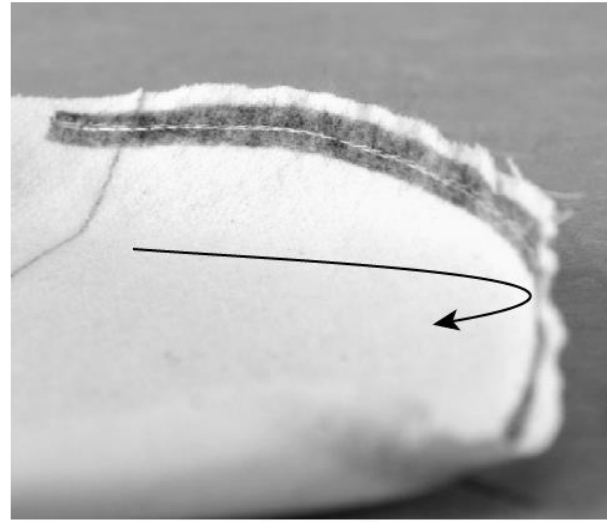
QleXX offers a shrinkage between 1-3 %.

If more shrinkage is required,  
use the special foot SUSEI A 227-1/4  
with adjustable tension.

Stitch



Use of steam iron

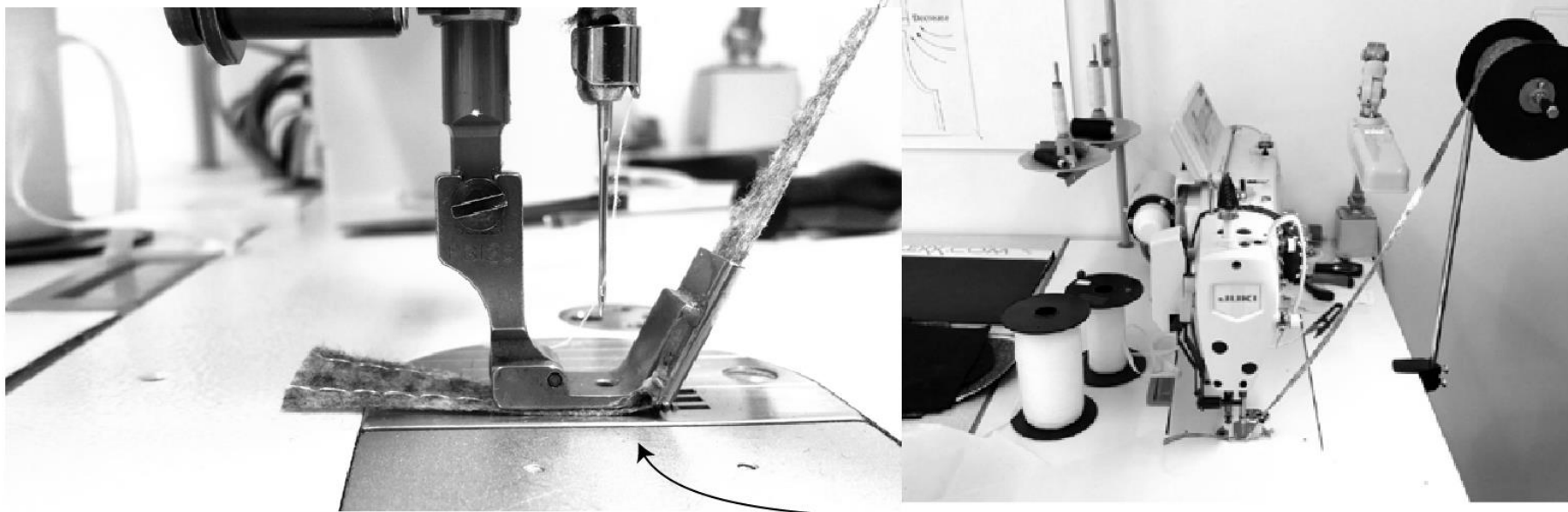


Tailormade result



Sleevehead

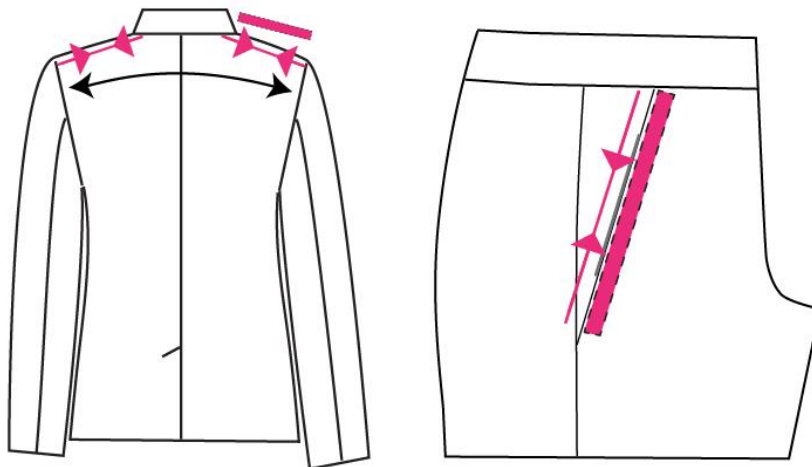




12mm • Shoulder seams

12mm • Pockets

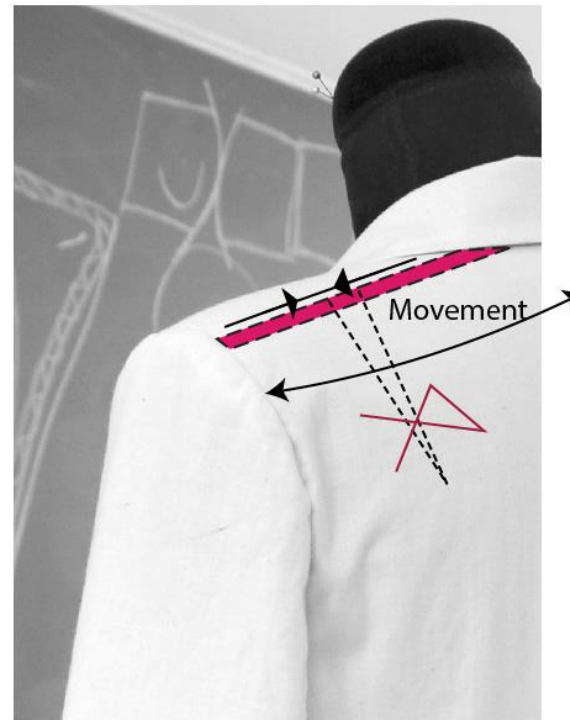
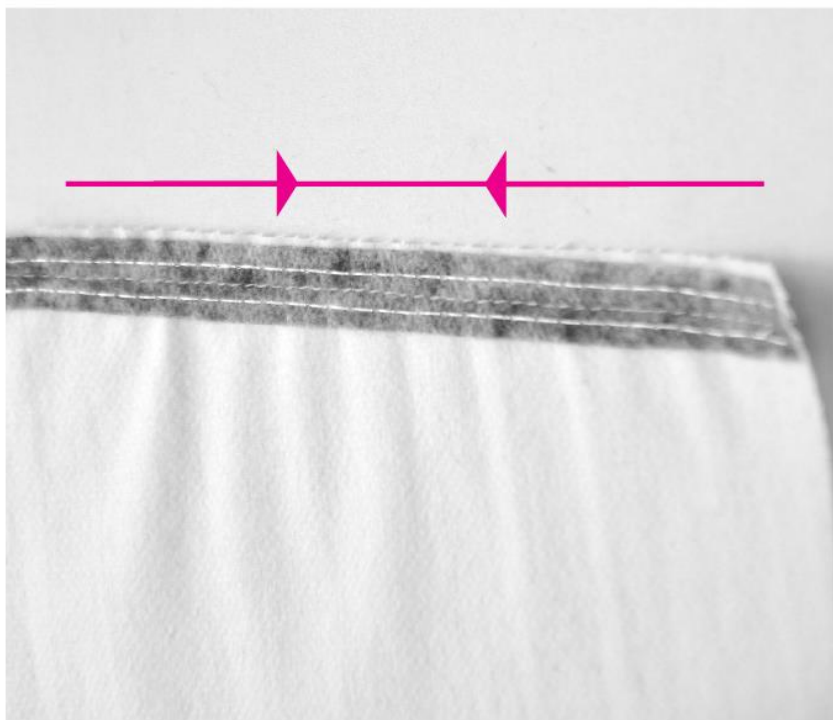
First sew and then iron



QleXX offers a shrinkage between 1-3 %.

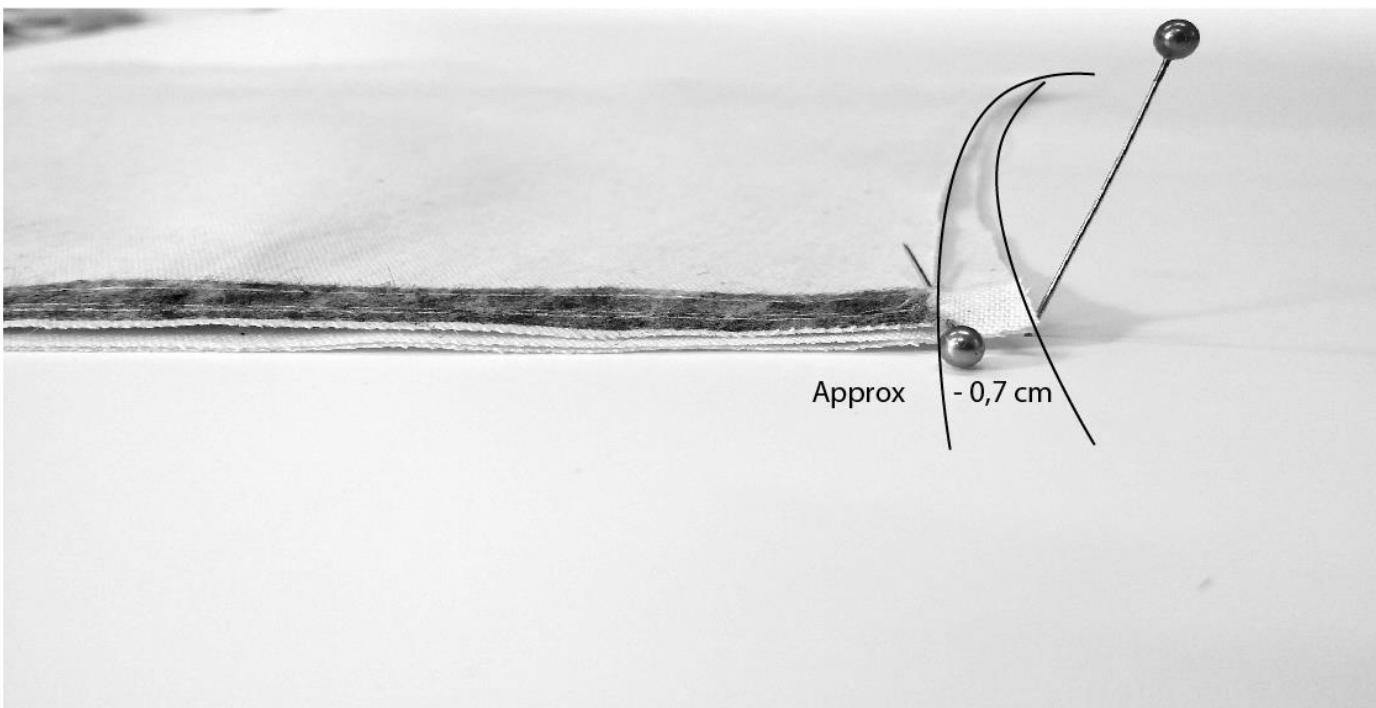
If more shrinkage is required,  
use the special foot SUSEI A 227-1/2  
with adjustable tension.

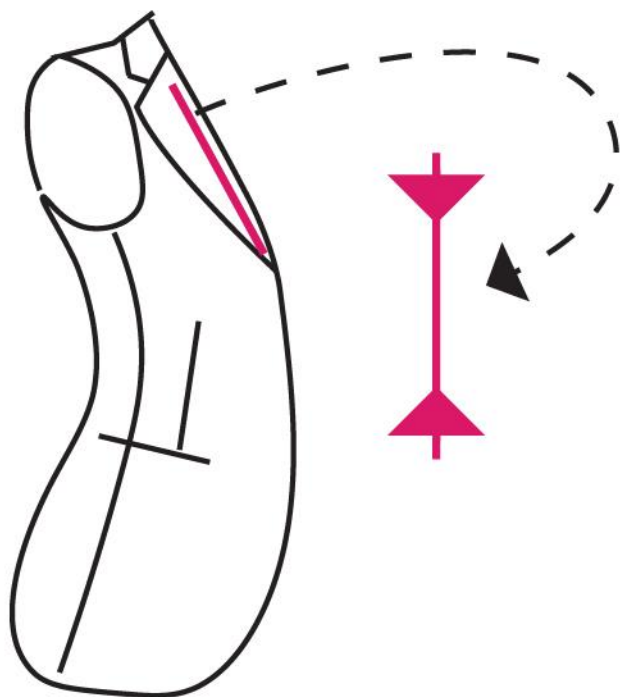
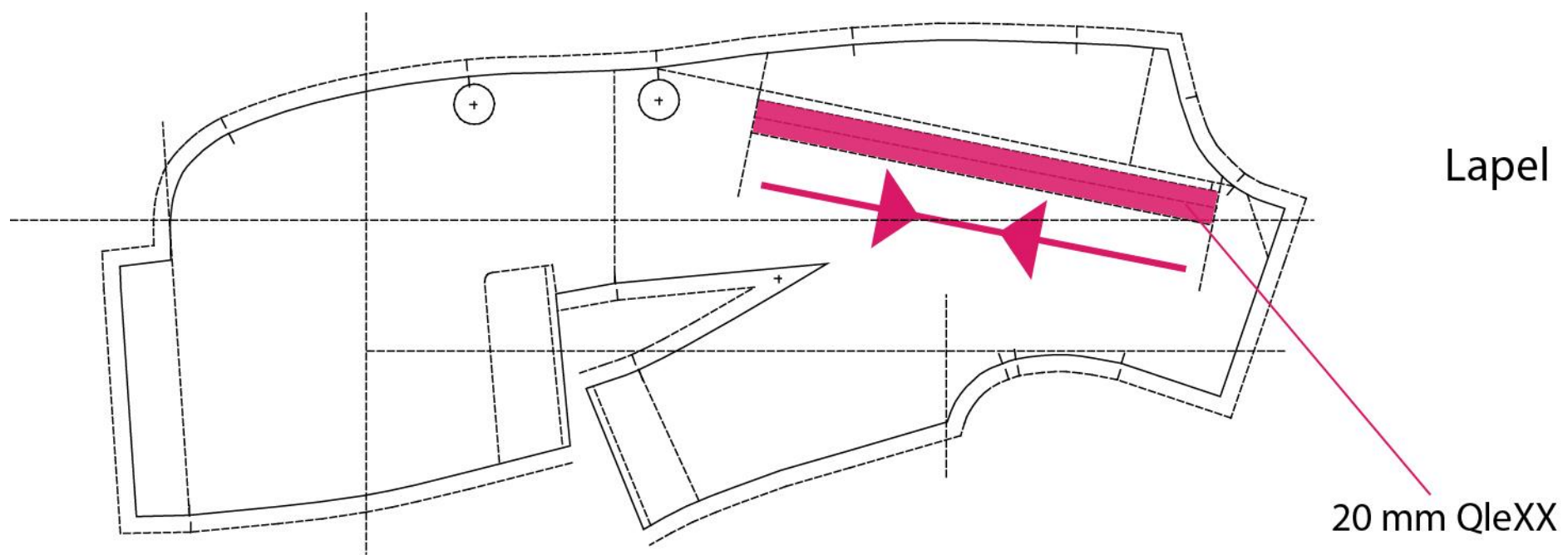
**QLEXX®**



Back shoulder seams

Precise tailoring  
to achieve  
the perfect fit



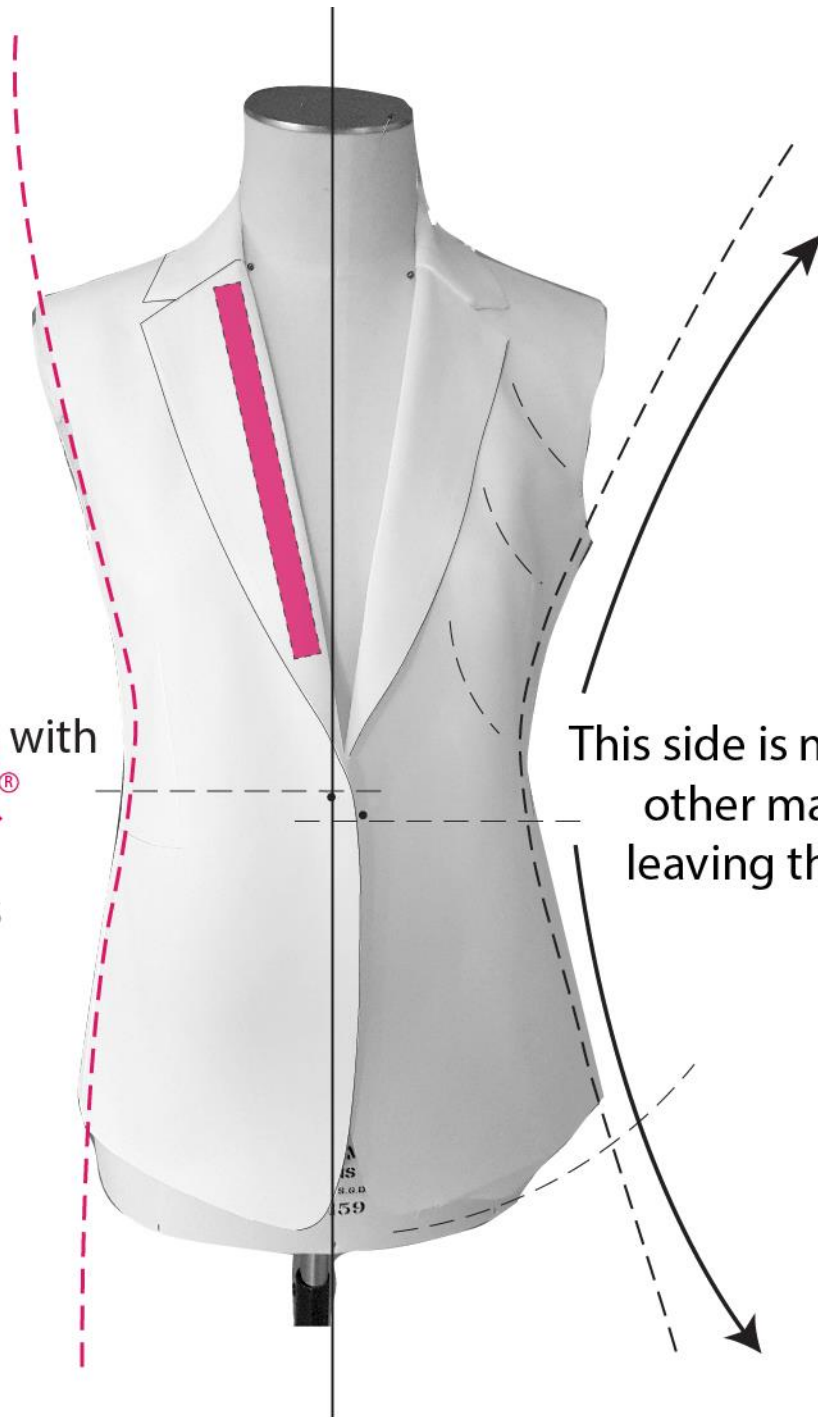


First dry iron and then use of a steam iron





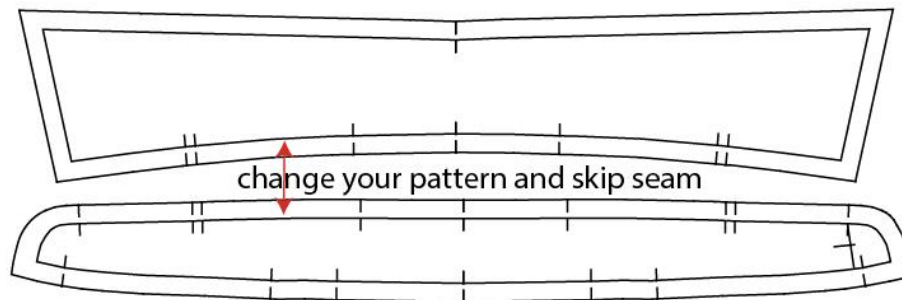
This side is made with  
**QLEXXX®**  
for nicer  
body curves



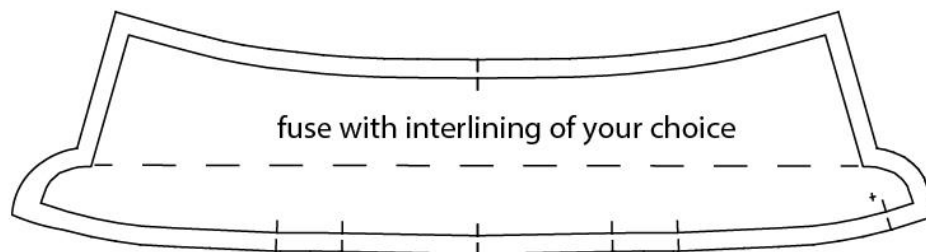
This side is made with  
other materials  
leaving the body



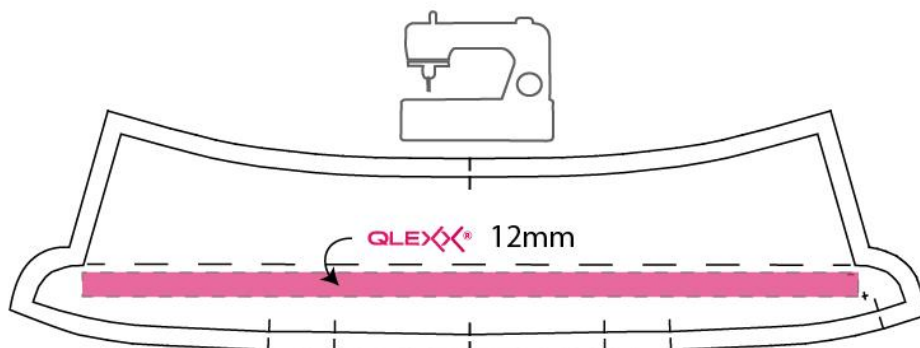
1



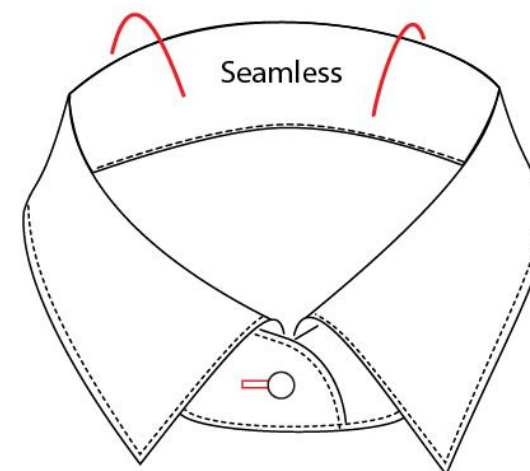
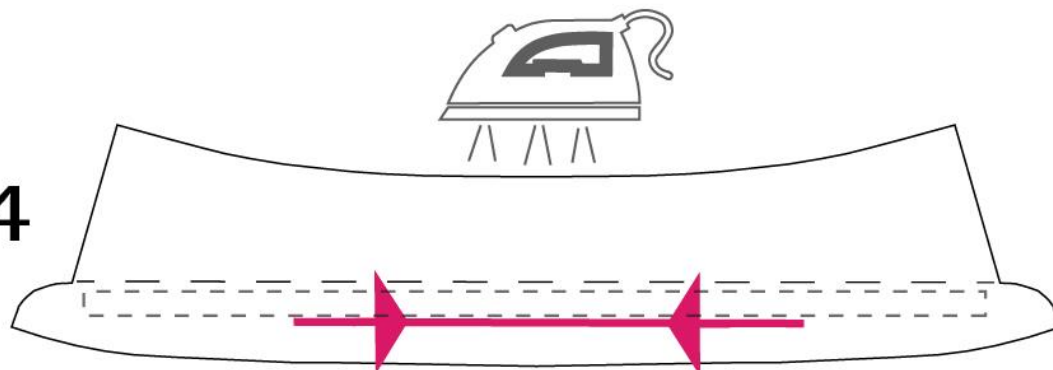
2

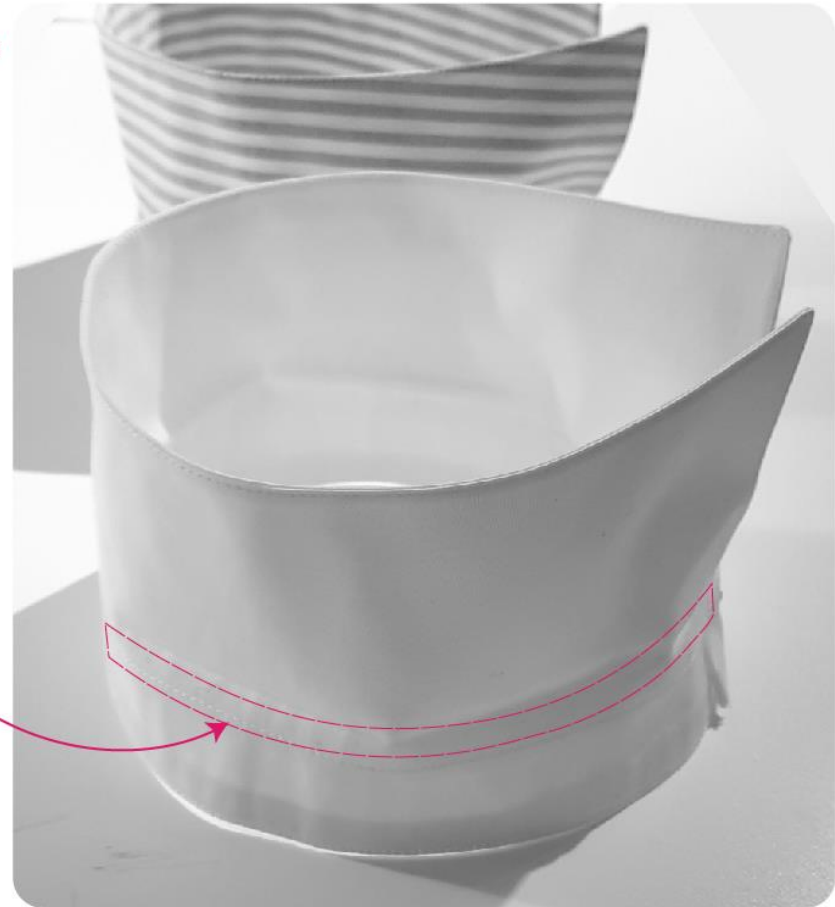


3

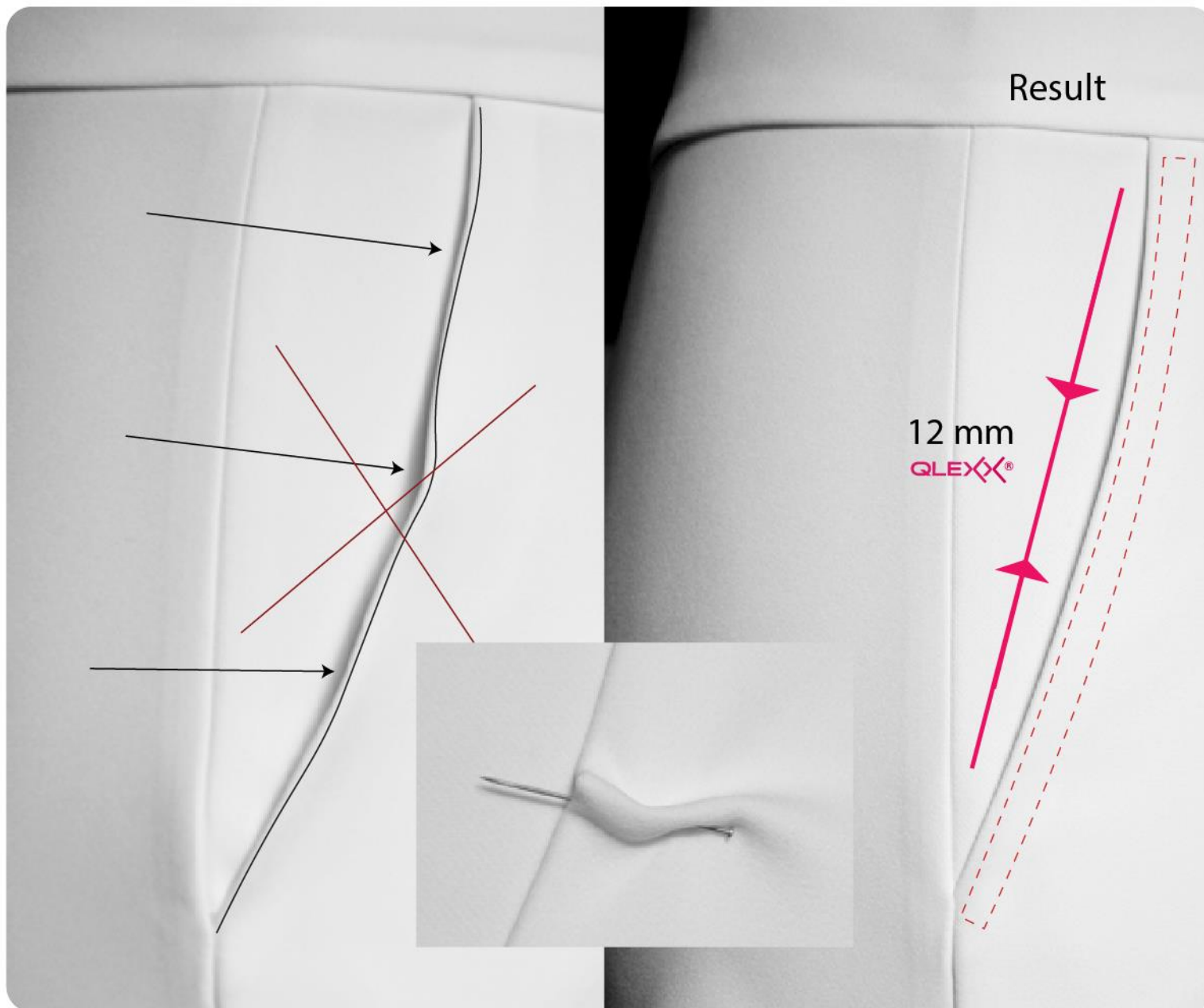


4



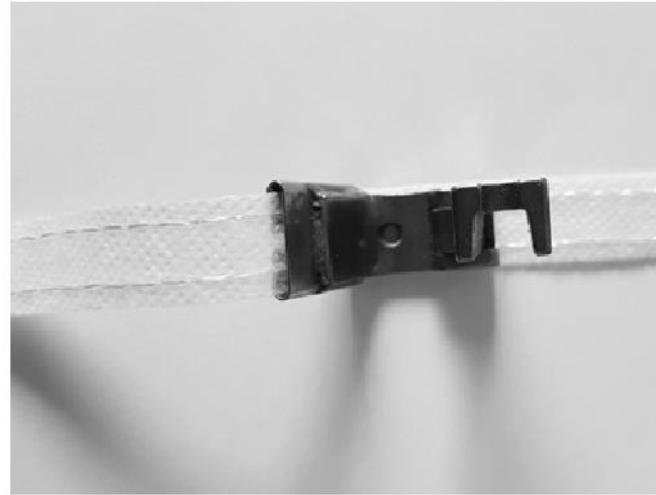






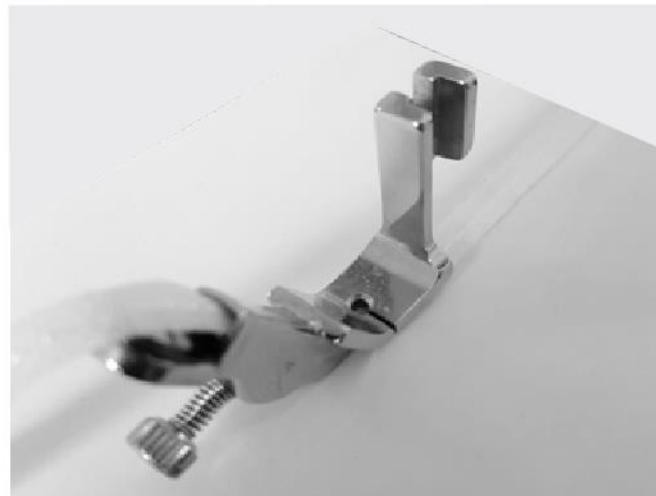
Pocket in  
trousers and skirts

12 mm  
SUSEI A227-1/2



Specials to process **QLEX®**  
are available at your  
sewing machine supplier

6 mm  
SUSEI A227-1/4





QLEX®



Permess



<https://youtu.be/9vCgueTTtnc>