

# LUX Shield



## Range

- Sizes: 4, 6, 8 mm
- All finishes from our electroplating catalogue
- All tape colours from our shade card
- Choice of Shiny and Matt appearance
- Also available in LUX siMMiz (symmetrical teeth) size 6 mm.

## Zip models and functions

LUX4 – all functions

LUX6 – all functions

LUX8 – all functions

## Main uses

Leather garments

Leather accessories

Footwear

Stone washed garments

Post dyed garments

## Benefits

LUX Shield is the most advanced range of corrosion resistant zips whose teeth and sliders do not get discoloured due to contact with any leather treatment chemicals. The proprietary Shield finish protects the electroplated finish from chemicals and minimises the damage caused by regular abrasion. Shield combines specially engineered chemical and mechanical properties to enhance the appearance and the life of zips.

## Description

Metal zips used in accessories are prone to oxidation and corrosion caused by tanning chemicals contained in leather. These substances impede smooth running of the zip, sometimes to the point of jamming, not to mention ruining the product's appearance. Thanks to a unique chemical and mechanical process, LUX Shield zips are resistant to oxidation and corrosion and deliver a smooth running performance.

# LUX Shield

## Why LUX Shield?

Corrosion is a natural process that converts refined metal to their more stable oxide form. It is the gradual destruction of materials (usually metals) through chemical reaction with the environment. Many alloys corrode merely from exposure to the moisture in the air but the process can be strongly affected by exposure to certain substances such as leather tanning chemicals.

Coats Opti has, through its in-house R&D, developed a unique and advanced formula which renders the zip's teeth and slider resistant to corrosion caused by tanning chemicals and atmospheric exposure besides enhancing the zip's runnability by lowering friction. This formula is combined with a superior mechanical teeth forming process to produce the LUX Shield range of zips.

## Technical characteristics

LUX Shield's protective finish and precisely formed teeth not only improve the zip's appearance but enhances its durability.

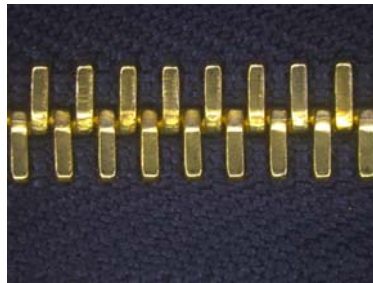
In our in-house tests, after 10,000 reciprocation cycles with weights applied according to the zip's class (Class C in the case of LUX6), LUX Shield retained its attractive finish as well as its smooth runnability.

The Shield finish reduces the mechanical wear in precious metal finishes (gold, palladium, ruthenium) and in standard

## Recommendations

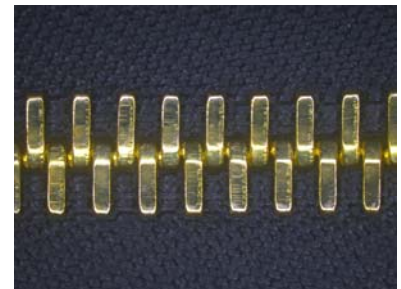
Before proceeding to bulk production, Coats Opti recommends that you run tests and production trials on all zip uses/applications in order to verify that the product meets the end user requirements as well as the demands of internal processing conditions.

Coats Opti supports customers with advice on individual applications when requested. If you have any questions or concerns, please contact us.



LUX6 Shield shiny - Gold eco

Before 10.000 use cycles



LUX6 - Gold eco

Before 8.000 use cycles



LUX6 Shield shiny – Gold eco

After 10.000 use cycles



LUX6 - Gold eco

After 8.000 use cycles