



# Coats Gral Binder

Coats Gral Binder is a multi-filament polyester yarn that is used in designs that call for standard low shrink (2%) binders. Coats Gral Binder package lengths are consistent and can withstand high stranding speeds. Coats Gral Binder is also available in 1 end and 2 end put ups.



## Main Uses:

- Binder yarn for loose tube telecommunication cables
- Ideal for dual end binders for optimum binder speeds (up to 120m/min)

## Why choose Gral Binder?

- Prevents indentation of loose tubes.
- Inventory control and schedule assistance.
- Package specialization and customization (tubes, cones, spools, lengths and weights).
- Package stability adjustments based on pay-off requirements (tack, wind ratio, density).
- Cost efficiencies and custom-made design capability available.
- Meets Coats restricted substance list.

## Technical Services

Our team of experts deliver innovative solutions globally.



# Coats Gral Binder

**MULTI FILAMENT  
POLYESTER**

Product Information

Description	Linear Density Average (g/m)	Tensile Strength Average (N)	Elongation NOM (%)	Maximum Shrinkage (%)
Test Method	ASTM D885	ASTM D885	ASTM D885	ASTM D885
Gral Binder 1000D	0.110	85	10	2% at 180°C
Gral Binder 1500D	0.167	115	10	2% at 180°C
Gral Binder 2000D	0.220	160	10	2% at 180°C

\*All properties reference measurements made to single end components.

## Thermal Properties:

- Melts at 260°C, softens at 220 - 240°C

## Chemical Properties:

- Mineral acids: Resistant to most mineral acids
- Alkalies: Essentially unaffected by weak alkalis, but less resistant to stronger alkalis, especially at higher temperatures
- Organic solvents: Unaffected
- Bleaching: Unaffected
- Insects / microorganisms (mildew, rot): Unaffected

## Packaging:

- A variety of packaging options are available. Standard packaging is listed below.

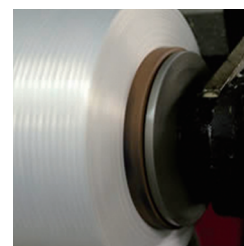
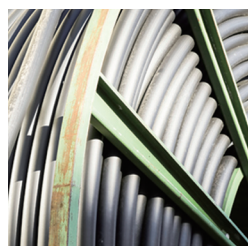
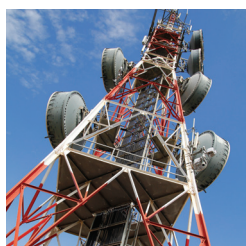
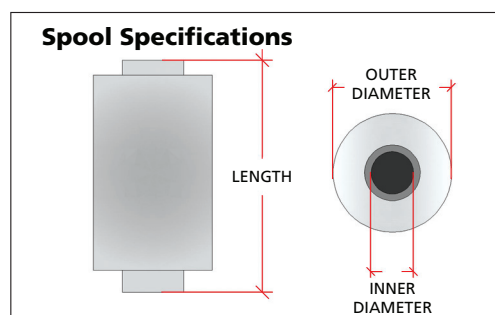
Standard Spool Specifications	Unit	Gral Binder 1000D	Gral Binder 1500D	Gral Binder 2000D
Length per Spool	KM	34	25.2	17
Inner Diameter	mm	128	128	128
Length	mm	216	216	216
Outer Diameter	mm	240	240	240

\* All properties reference measurements made to single end components.

## Package Options:

Standard KM per spool are available for all tube options. Alternative lengths are available.

Inner Diameter (mm)	Length (mm)
128	216
128	178
107	216
98.4	216
94	185
91.4	170



Since conditions and applications vary considerably in the use of a product, the customer and/or user should assure herself or himself that the product meets end customer requirements and is suitable for the intended end use. Coats accepts no liability for unsuitable or improper use or application of products.

Information provided above is based on current averages and should be taken only as indicative. Coats accepts no liability for the preciseness and correctness of the information provided.

Product information sheets are updated from time to time, please be sure you are referring to the most recent publication. Coats supports customers with advice on individual applications on request; if you have any questions or concerns, please contact us.

