

COATS
*epic
liquifense*



**POLYESTER CORESPUN
WITH LIQUID DEFENSE**

Coats® Epic™ Liquifense

Coats Epic Liquifense, a high-tech PFC Free 100% polyester corespun thread, inhibits fluid penetration through sewn seams.

The thread construction and specially formulated finish lock the thread in the seam, limiting the thread movement, and providing droplet resistance.

WHY CHOOSE COATS EPIC LIQUIFENSE?

- Achieve ANSI/AAMI PB70 Level 2 Protection without the use of seam tape
- High seam strength due to the construction of Epic, with the continuous filament polyester core and soft staple polyester wrap
- The fibres on the surface of the thread help to “lock” the thread in the seam, limiting thread movement and helping to prevent runback
- Coats Epic Liquifense is a high-tech PFC free corespun thread that combines a high tenacity polyester fibre wrap to make a versatile and productive thread
- Specially formulated finish delivers a high degree of droplet resistance
- Specially lubricated to deliver outstanding sewing performance in the most demanding applications
- The high strength polyester filament core provides excellent seam appearance and strength
- Excellent abrasion resistance delivers flexibility and durability in the seams
- Globally available in an extensive colour range

MAIN USES:

- Healthcare PPE
- Consumer PPE
- Industrial PPE
- Military



Coats Epic Liquifense

PRODUCT RANGE

Art/Tkt	Tex	Ticket	Length	Strength cN	Elongation % Min-Max	Needle Size Metric
CG25180	18	180	5000 m	780	17 - 22	65 - 75
CGE5120	24	120	5000 m	1,190	17 - 22	70 - 90
CG24100	30	100	5000 m	1,500	17 - 22	70 - 90
CGE3080	40	80	5000 m	1,960	18 - 24	90 - 110
CGE3040	80	40	3000 m	4,790	18 - 25	110 - 130

THERMAL PROPERTIES

Melts at 250-260°C, softens at 220-240°C

Shrinkage less than 1% @ 150°C

CHEMICAL PROPERTIES

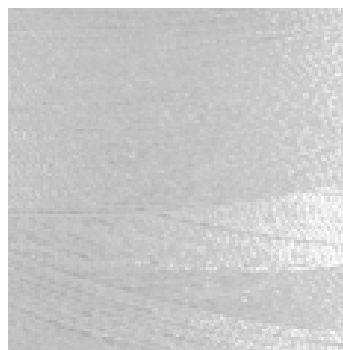
Mineral acids:	Resistant to most mineral acids
Alkalis:	Essentially unaffected by weak alkalis, but less resistant to stronger alkalis, especially at higher temperatures
Organic solvents:	Generally unaffected, but soluble in some phenolic compounds
Bleaching:	Unaffected
Insects / microorganisms (mildew, rot):	Unaffected
Laundering / dry cleaning:	Unaffected

FASTNESS PROPERTIES

Washing at 60°C	(ISO 105 C10:2006 C(3))	Grade 4
Water Fastness	(ISO 105 E01:2010)	Grade 4
Rub Fastness	(ISO 105 X12:2001)	Grade 4
Hypochlorite Fastness	(ISO 105 N01:1993)	Grade 4
Dry Cleaning Fastness	(ISO 105 D01: 2010)	Grade 4
Perspiration Fastness	(ISO 105 E04:2009)	Grade 4
Artificial Light Fastness	(ISO 105 B02:1994)	Grade 4



POLYESTER CORESPUN
WITH LIQUID DEFENSE



Since conditions and applications vary considerably in the use of a product, the customer and/or user should assure themselves that the product meets end customer requirements and is suitable for the intended end use. Coats accepts no liability for unsuitable or improper use or application of products. Information provided is based on current averages and should be taken only as indicative. Coats accepts no liability for the preciseness and correctness of the information provided. Product information sheets are updated for time to time, please be sure you are referring to the most recent publication. Coats supports customers with advice on individual applications on request; if you have any questions or concerns, please contact us. © Copyright reserved 2021



Coats Epic Liquifense

EXPERT REAL WORLD SUPPORT

The final cost of any product also includes hidden costs, fuelled by the methods and tools applied to it. Our experts know exactly how to reduce those costs, save time and increase productivity.



Seamworks

Install our Seamworks software to accurately calculate costs prior to production, putting an end to the risk of over or under ordering materials, and incurring unnecessary extra costs. The Seamworks tool is provided with installation, training and ongoing support included.



One to One Visits

There's no need to come to us, our experts will travel to your site. In person, online or via the phone, our trained consultants deal with the kind of issues any busy factory may face, providing a solution for today and a blueprint for future efficiency.



Training and Presentations

From product selection to stitch formation, the use of colour to solutions for common production issues, we take the learning gathered through years of hands on experience and present it in the form of high impact seminars, workshops and presentations.



Embroidery Service Centre

Our Embroidery Service Centre makes embroidering a design much easier, increasing productivity at the same time as enhancing the design itself. Email the design and any problematic issues to us and our technicians will email the improved design right back.

To drive your hidden costs down, talk to Coats. From thread audits in pre-production to the latest technical bulletins, we'll provide support that achieves measurable results.

For more information, talk to your Coats representative today or visit www.coats.com/epic-liquifense

OTHER PRODUCTS IN THE EPIC RANGE

To complement the Epic range, we also have a selection of specialist Epic threads. Each of these combines the superior properties of the Epic product with additional benefits specific to the end use.

Product Name	Description
Epic AS	Range of threads designed for outdoor wear and engineered to provide excellent static and dynamic friction values which reduce leakage of 'down' through the needle hole.
Epic	High quality, polyester corespun that is precisely engineered to create durable, attractive seams on a wide range of fabrics across many applications.
Epic RD	Polyester corespun thread which delivers passive flame retardant properties, produced to conform to Nightwear Safety Regulations making it an ideal choice for children's nightwear.
Epic Metallic	Pick-and-mix colour range of metallised yarn and polyester thread to sew decorative stitching on denim.
Epic Multicolour	A pure polyester thread that is part of the flagship Epic range of threads and gives each garment a truly unique finish.
Epic Protect	Coats Epic Protect sewing thread is treated with an innovative process to give the finished thread anti-microbial / anti-fungal properties.
Epic Rugged	High-tech thread which combines the strength, performance and superior properties of Epic with bleach-fastness for a thread that can withstand denim wash processes.
Epic SIF	Polyester covered corespun thread that is free from silicone and ideal for filtration needs within the automotive industry.
Epic Supermax	Ultimate sewing thread for smooth, premium-looking seams on fine tailoring and high quality garments.
Epic Verifi	Versatile quality polyester corespun sewing thread with an embedded security system.

Special use Epic products are typically available across a select range of ticket sizes and technical information will in some cases vary from the above table.



POLYESTER CORESPUN
WITH LIQUID DEFENSE

