

**COATS**  
dual duty  
indigo



POLYESTER  
CORESPUN WITH  
COTTON WRAP

# Coats Dual Duty Indigo

Coats Dual Duty Indigo is the eco-friendly response to natural indigo dyed sewing threads.

Free of harmful substances, Dual Duty Indigo gives the natural look of a faded blue, matching the natural fade effect of the denim garment. After sewing, the saturated colour of the thread is washed down during the denim wash process to give a unique fade effect so that every garment sewn with Dual Duty Indigo is truly unique. The polyester filament core of Dual Duty Indigo offers excellent strength and durability, while the long staple cotton wrap ensures excellent sewing performance and protects the core from needle heat.

In the world of denim, the magic of 'Iro-ochi' or 'Atari' happens at the wash process but this can also destroy the seams if the sewing thread is inferior quality, meaning expensive and unsightly repairs after washing. With Dual Duty True Indigo sewing thread you can banish costly after wash repairs and focus on creating high performance iconic denim pieces which will last a lifetime.

## WHY CHOOSE DUAL DUTY INDIGO?

- Coats Dual Duty Indigo offers special shade effects
- Coats Dual Duty Indigo is a high-tenacity corespun thread delivering outstanding sewing performance and maximum durability
- STANDARD 100 by OEKO-TEX® certified

## MAIN USES:

- Denim
- Jeans
- Ladieswear
- Menswear
- Various other applications where a special shade effect is desired

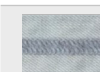
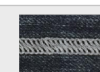
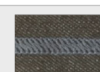
## INDIGO = SHADE REF#99ZTY

No Wash

Rinse Wash

Stone Wash

Bleaching





# Coats Dual Duty Indigo

## PRODUCT RANGE

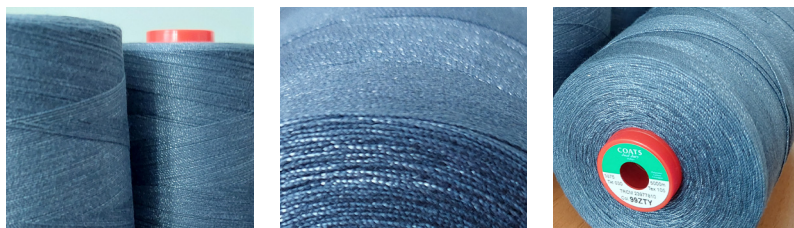
Art / Tkt	TEX	Ticket	Length	Strength cN	Elongation % Min - Max	Needle Size Metric
3875 120	24	120	5,000m	1,040	18 - 22	75 - 90
3875 075	40	75	5,000m	1,860	18 - 24	90 - 100
3875 050*	60	50	5,000m	2,840	18 - 24	100 - 120
3875 050	60	50	5,000m	3,040	18 - 24	100 - 120
3875 036	80	36	5,000m	3,530	18 - 24	110 - 130
3875 030	105	30	5,000m	3,720	18 - 24	110 - 130
3875 025	120	25	5,000m	5,390	20 - 26	120 - 140

\*Indicates 3 ply thread.

Standard put-up length for Dual Duty Indigo is 5,000m. For long length put-up 10,000m, use article code 3871 in place of 3875. Needle size recommendations are a guide only and ultimately depend on the sewing application.

## AREAS OF APPLICATION

Dual Duty Indigo is ideal for decorative stitching as well as for general seaming. It is available in the full thread size range of Dual Duty. Place your order using product code 3875 for Dual Duty Indigo, followed by the shade reference 99ZTY for Indigo, e.g. 3875050 – 99ZTY is Dual Duty Indigo ticket 50; 5000m in Indigo shade 99ZTY. For denim stitching a coarse thread size is recommended, for example ticket 50 / Tex 60.



## THERMAL PROPERTIES

Polyester melts at 250 - 260°C, softens at 220 - 240°C

Cotton discolours after prolonged exposure to high temperatures

Thread shrinkage less than 1% @ 150°C

## CHEMICAL PROPERTIES

Mineral acids:	Polyester: is resistant to most mineral acids Cotton: disintegrates in hot dilute and cold concentrated acids
Alkalies:	Polyester: essentially unaffected by weak alkalis, but less resistant to stronger alkalis, especially at higher temperatures Cotton: swells in caustic, no appreciable strength loss
Organic solvents:	Polyester: generally unaffected, but soluble in some phenolic compounds Cotton: degraded by some solvents
Bleaching:	Polyester: unaffected Cotton: bleached by hypochlorite and peroxides
Insects / microorganisms (mildew, rot):	Polyester: unaffected Cotton: degrades but can be treated with special finishes
Laundering / dry cleaning:	Unaffected
Moisture regain:	Polyester: 0.4%, Cotton: 8%



# Coats Dual Duty Indigo

## EXPERT REAL WORLD SUPPORT

The final cost of any thread also includes hidden costs, fuelled by the methods and tools applied to it. Our experts know exactly how to reduce those costs, save time and increase productivity.



### Seamworks

Install our Seamworks software to accurately calculate costs prior to production, putting an end to the risk of over or under ordering materials, and incurring unnecessary extra costs. The Seamworks tool is provided with installation, training and ongoing support included.



### One to One Visits

There's no need to come to us, our experts will travel to your site. In person, online or via the phone, our trained consultants deal with the kind of issues any busy factory may face, providing a solution for today and a blueprint for future efficiency.



### Training and Presentations

From thread selection to stitch formation, the use of colour to solutions for common production issues, we take the learning gathered through years of hands on experience and present it in the form of high impact seminars, workshops and presentations.



### Embroidery Service Centre

Our Embroidery Service Centre makes embroidering a design much easier, increasing productivity at the same time as enhancing the design itself. Email the design and any problematic issues to us and our technicians will email the improved design right back.

To drive your hidden costs down, talk to Coats. From thread audits in pre-production to the latest technological bulletins, we'll provide support that achieves measurable results.

For more information, talk to your Coats representative today or visit [coats.com](http://coats.com)

## OTHER PRODUCTS IN THE DUAL DUTY RANGE

To complement the Dual Duty range, we also have a selection of specialist Dual Duty threads. Each of these have additional benefits specific to the end use.

Product Name	Description
Dual Duty Multi	Attractive two coloured heather-effect or melange thread that is ideal for embroidery and decorative stitching on denim.
Dual Duty Supercotton	Premium quality corespun sewing thread that has been especially developed for post dyed cotton garments.
Dual Duty	Attractive two coloured heather-effect or melange thread that is ideal for embroidery and decorative stitching on denim.
Dual Duty AW	Polyester corespun with cotton wrap with a water resistant finish
Dual Duty EcoVerde	Premium quality corespun thread that combines a high tenacity 100% recycled polyester filament core with a Better Cotton Initiative (BCI) certified cotton cover

Specialist Dual Duty products are typically available across a select range of ticket sizes and technical information will in some cases vary from the above table.



POLYESTER  
CORESPUN WITH  
COTTON WRAP



Since conditions and applications vary considerably in the use of a product, the customer and/or user should assure themselves that the product meets end customer requirements and is suitable for the intended end use. Coats accepts no liability for unsuitable or improper use or application of products. Information provided is based on current averages and should be taken only as indicative. Coats accepts no liability for the preciseness and correctness of the information provided. Product information sheets are updated for time to time, please be sure you are referring to the most recent publication. Coats supports customers with advice on individual applications on request; if you have any questions or concerns, please contact us. © Copyright reserved 2018