

SUSTAINABILITY BROCHURE

PERFORMANCE MATERIALS



WWW.COATS.COM
MARCH 2024

CONNECTING. PIONEERING. TRUSTED.

SUSTAINABILITY WITHOUT COMPROMISING ON QUALITY

Sustainability is key to survival – in business and globally. With eco-friendliness driving customer choice, we must all be seen to be playing our part.

Not just because it is a good thing to do, but because it is the right thing to do.

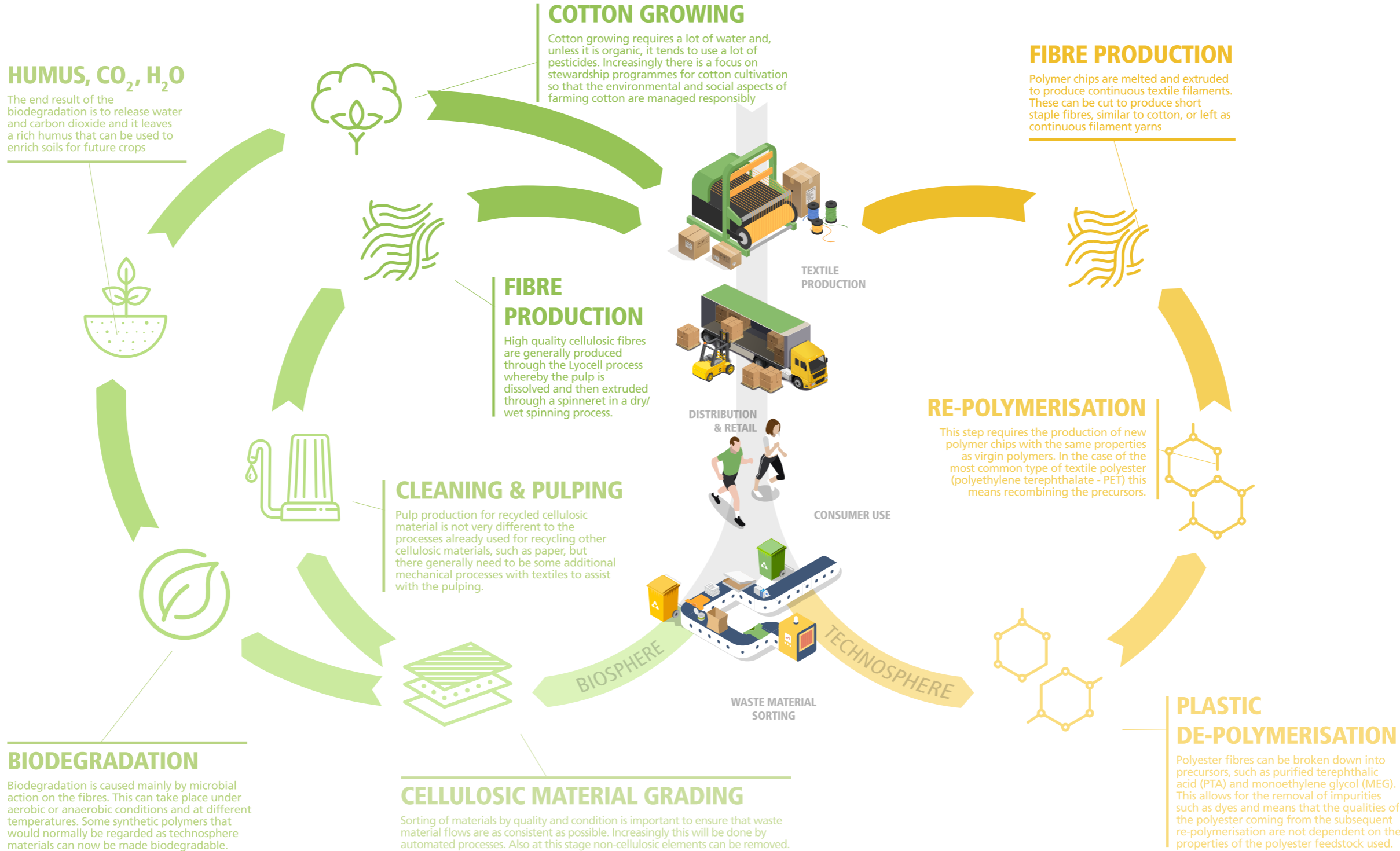
That is why we are proud of our Eco Journey, and of helping you deliver your sustainability agenda and targets.

We help find ways to waste less, while reusing and recycling more. We produce more innovative sustainable solutions, from threads to composites. And we champion alternative washing, dyeing and bleaching processes that are more sustainable.



**JOIN US
ON OUR JOURNEY
TO A 100%
CIRCULAR ECONOMY**

CIRCULAR ECONOMY



Sustainability is more than simply meeting targets and achieving goals. It is about how we think, and changing the way we do business for good. We are on a mission to a revolutionary circular economy for the textile industry, in the threads, yarns and composites we make, and in the way we work.



COATS® RESPONSIBLE SOURCING

Sustainability is more than simply meeting targets and achieving goals. It is about how we think, and changing the way we do business for good. We are on a mission to a revolutionary circular economy for the textile industry, in the threads, yarns and composites we make, and in the way we work.

STANDARDS	ECOVERDE™	DUAL DUTY™ ECOVERDE™	TRE-CERCHI™ VERO / +	ECOREGEN™	ECOCYCLE™	ECO-B™
Composition	100% Recycled PET	100% Recycled PET Core with BCI Certified Cotton cover	100% Cotton	100% Lyocell	PVA and Cotton	Recycled PET with CiCLO additive
Global Recycled Standard	•	•				•
Better Cotton Initiative		•	•			
OEKO-TEX STANDARD 100	•	•	•	•	•	•
Global Organic Textile Standard						
Cradle to Cradle*	•	•	•	•	•	

*Certification in process

CERTIFICATIONS AND MEMBERSHIPS

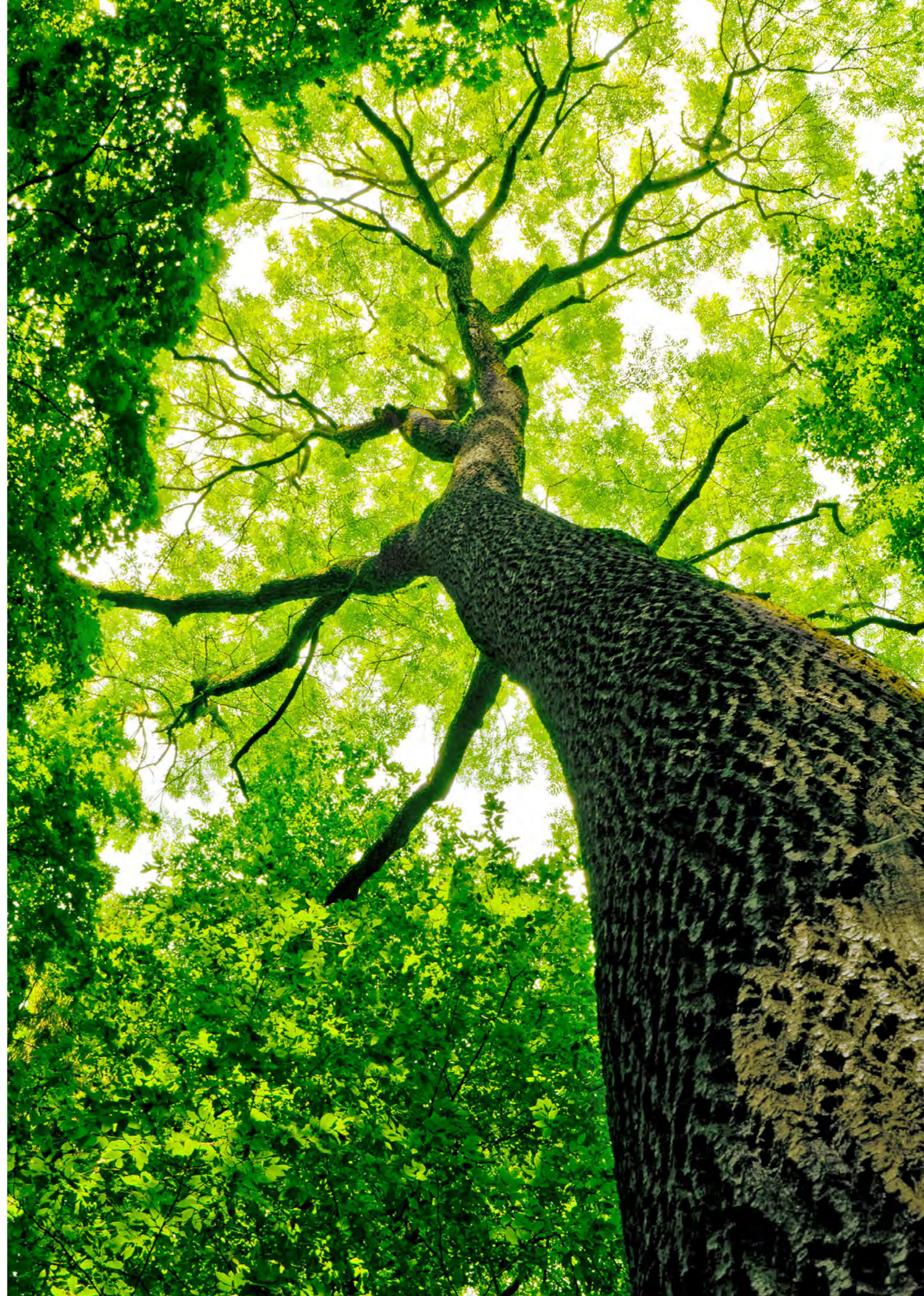


THE GREENEST RANGE ON THE PLANET

Sustainability may help the environment, but it won't help your business if the products you use don't perform every bit as brilliantly as their virgin equivalents.

At Coats®, we take pride in every eco-friendly thread, yarn, and tape, all of which offer equally superior performance and excellent quality.

We continually expand our product range, with the goal of transitioning all our premium polyester threads to recycled alternatives by 2024. Our global Innovation Hubs are diligently exploring new materials, methods, and processes to provide you with more choices without compromising on quality.



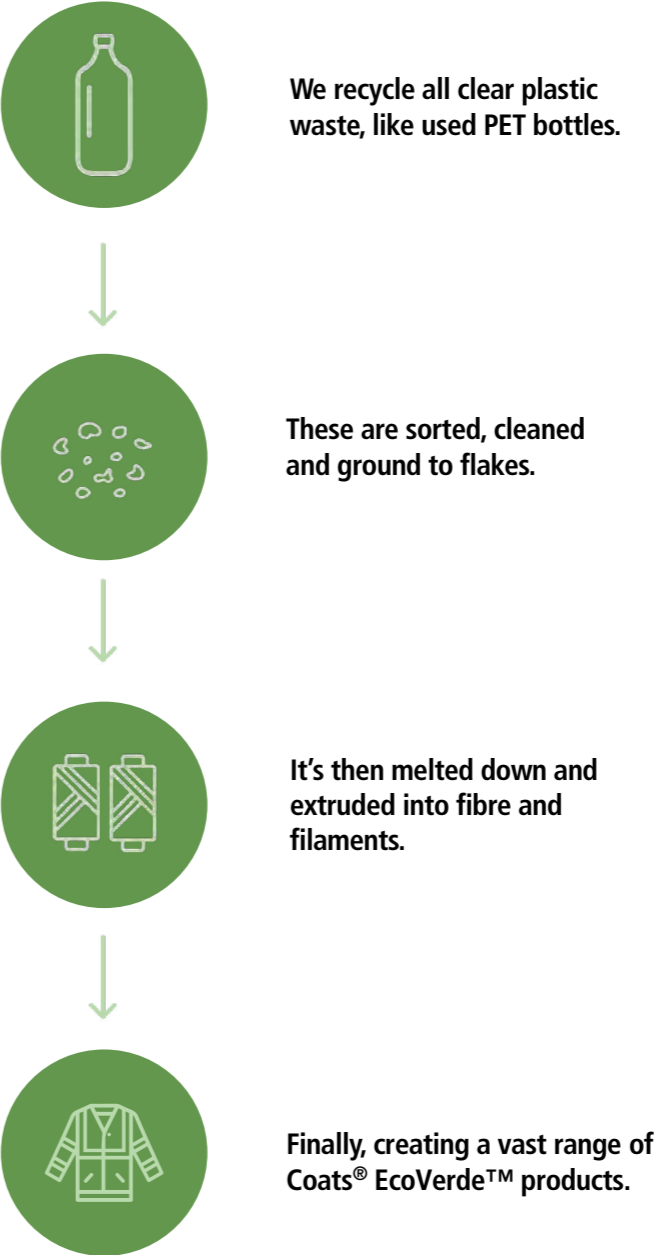


ECOVERDE™



The first globally available 100% recycled line of GRS certified premium corespun and textured threads derived from post-consumer PET bottles. It delivers the same proven level of performance as the industry's leading non-recycled threads, but with a drastically reduced carbon footprint.

Here's how it works:





ECOCYCLE™

A GROUND BREAKING WATER DISSOLVABLE CONCEPT

This innovation overcomes the challenges associated with garment recycling at the end of a lifecycle. It helps facilitate the easy and low-cost separation of non-textile and textile components. It is all part of Coats® Journey towards a circular world.

Supports circularity: When washed at 95 °C, it allows for the easy and low-cost separation of non-textile and textile components for end-of-life recycling.

Proven durability: No impact on garment integrity or quality when washed at 40 °C.

Great washability: Meets domestic and industrial washing conditions.

Multiple sizes: Available in 4 different sizes.

Versatile: Suitable for a range of different apparel applications i.e. activewear, intimates, ladieswear, childrenswear, etc.

PRODUCT RANGE

Article Ticket	Ticket	Tex	Length	Average Strength cN	Elongation % Min - Max	Recommended Needle Size Metric
EL05120	120	27	5,000M	884	16 - 21	75 - 90
EL05080	080	35	5,000M	1,122	16 - 21	80 - 100
EL07060	060	50	2,500M	1,780	16 - 21	100 - 110
EL07030	030	90	2,500M	3,134	16 - 21	100 - 120





ECOREGEN™

100% LYOCELL

Offering outstanding comfort and enhanced elongation, EcoRegen™ is fully biodegradable and compostable due to its cellulosic origin. Lyocell in comparison to cotton, does not require irrigation, pesticides, or labour-intensive processes during its cultivation.

It's made from 100% controlled wood sources too. So, it boasts a closed-loop manufacturing process, a vastly reduced carbon footprint – and it means you can be more sustainable too.

For added peace of mind, EcoRegen™ is FSC and Canopy compliant.

WHY CHOOSE ECOREGEN™?

- Eco-friendly regenerated fibre, made from sustainably sourced wood pulp
- Fully biodegradable and compostable due to its cellulosic origin

MAIN USES

- Home textiles
- Mattresses
- Outdoor and sports goods
- Workwear

PRODUCT RANGE

Article Ticket	Ticket	Tex	Length m	Average Strength cN	Elongation % Min - Max
ER05060	60	30	5,000	830	8 - 14
ER05050	50	35	5,000	1,029	8 - 14
ER05040	40	40	5,000	1,239	8 - 14
ER05030	30	60	5,000	1,817	8 - 14
ER05024	24	80	5,000	2,058	8 - 14
ER05018	18	105	5,000	3,234	8 - 14

ECO-B™



POWERED BY CICLO®

A recycled polyester thread powered by CiCLO® additive technology; an easy-to-implement upstream solution that allows synthetic plastic based fibers to behave more like natural fibers, such as wool.

As a result, we leave less waste behind on our journey to create a more healthy, happy planet.

Product range available in a variety of sizes.

Sustainable: Utilises proprietary technology to reduce plastic waste in landfills and plastic pollution in our oceans.

Functional: CiCLO® fibres have the performance characteristics of plastic based synthetic fibres but are enhanced for the earth's ecosystems.

Sensible: The CiCLO® fibres behave more like natural fibres if they end up in the environment.

Versatile: Suitable for a range of different apparel applications i.e. activewear, intimates, ladieswear, childrenswear, etc.

Safe: Meets STANDARD 100 by OEKO-TEX.

PRODUCT RANGE AVAILABLE IN A VARIETY OF SIZES



COATS
epic Eco-B



RECYCLED CORESPUN
POLYESTER WITH
CICLO® ADDITIVE

COATS
sylko Eco-B



RECYCLED TRILOBAL
POLYESTER WITH
CICLO® ADDITIVE

COATS
gramax Eco-B



RECYCLED TEXTURED
POLYESTER WITH
CICLO® ADDITIVE





EPIC™ ECOVERDE™

DURABLE. RESPONSIBLE.

Coats® Epic™ EcoVerde™ is a 100% recycled premium polyester corespun sewing thread that has been precisely engineered to create durable, attractive seams across a wide range of recycled fabrics and materials.

Available in special finishes such as: Anti-wick PFC-free, UL certificate, silicone-free for Filtration applications, Protect, Rugged, Supermax, AS to reduce down leakage, Bleach fastness, High lubrication, Low lubrication, No lubrication version, and High twist version.

WHY CHOOSE EPIC™ ECOVERDE™?

- Lower repair rates, manufacturer returns and irregularities for increased productivity
- World-class quality and enhanced abrasion resistance
- Allows use of finer threads and needles for superior seam appearance without compromising strength
- Perfect colour matching and excellent colour fastness

MAIN USES

- Uniforms and workwear
- Filtration
- Furniture
- Upholstery
- Household textiles
- Mattresses and bedding
- Outdoor goods
- Sporting goods

PRODUCT RANGE

Article Ticket	Ticket	Tex	Length m	Average Strength cN	Elongation % Min - Max	Recommended Needle Size Metric
EV51030	30	105	5,000	4,787	18 - 25	110 - 130
EV55030	30	105	10,000	4,787	18 - 25	110 - 130
EV55050	50	60	10,000	3,038	17 - 26	100 - 120
EV55080	80	40	10000	1,965	18 - 24	90 - 100
EVE0080	80	40	20,000	1,965	18 - 24	90 - 100
EV5H100	100	30	5,000	1,490	17 - 26	70 - 90
EV55120	120	24	10,000	1,186	17 - 26	70 - 90
EVR9120	120	24	17,000	1,186	17 - 26	70 - 90



GRAMAX™ ECOVERDE™

COMFORT THAT CARES.

This continuous filament textured thread may be recycled, but it still provides maximum softness. It's ideal for use in the loopers of overlocking, serging and cover seaming for next-to-the-skin comfort.

Available in special finishes like: Anti-wick PFC-free, Protect, AS for reducing down leakage, high lubrication, Low lubrication, and No lubrication version.

WHY CHOOSE GRAMAX™ ECOVERDE™?

- Good seam coverage for neat, comfortable seams
- Low shrinkage property, so no seam distortion after washing
- High level of colour fastness even in demanding washing conditions

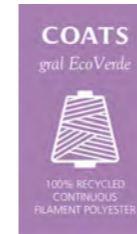
MAIN USES

- Household textiles
- Uniforms & workwear
- Mattresses and bedding
- Outdoor goods
- Sporting goods

PRODUCT RANGE

Article Ticket	Ticket	Tex	Length m	Average Strength cN	Elongation % Min - Max
EV09160	160	18	20,000	618	19- 28
EV17160	160	18	10,000	618	19- 28
EV09080	80	35	20,000	1,440	19 - 28





GRAL™ ECOVERDE™

HIGH STANDARDS. LOW IMPACT.

A lubricated polyester thread that produces attractive fine seams – especially in leather applications. It's made from recycled pre-stabilised high tenacity continuous filament polyester – which is compatible with all footwear materials and delivers an outstanding look, feel and performance.

Available in special finishes like: Anti-wick PFC-free, Protect, AS for reducing down leakage, high lubrication, Low lubrication, and No lubrication version.

WHY CHOOSE GRAL™ ECOVERDE™?

- The lubricated finish reduces friction and needle abrasion
- Excellent loop formation
- Consistent stitch and neat seam formation

MAIN USES

- Filtration
- Multi-needle quilting
- Outdoor goods
- Sporting goods

PRODUCT RANGE

Article Ticket	Ticket	Tex	Length m	Average Strength cN	Elongation % Min - Max	Recommended Needle Size Metric
EV27180	180	14	20,000	875	17 - 24	60-80



GRAL™ QUILT ECOVERDE™

RELAX. IT'S ECO-FRIENDLY.

Coats® Gral™ Quilt EcoVerde™ is a specially finished 100% recycled polyester thread made from pre-stabilised high tenacity continuous filament polyester.

The finishing process given to Gral™ Quilt EcoVerde™ gives our thread extra stability and controlled extension. Its superior lubrication ensures consistent loop formation and neat seam appearance. We offer Gral™ Quilt EcoVerde™ in package sizes to suit most machines. Gral™ Quilt EcoVerde™ is for multi-needle quilting operations in the bedding and mattress sector.

WHY CHOOSE GRAL™ QUILT ECOVERDE™?

- Made from pre-stabilised 100% recycled high tenacity continuous filament polyester
- Ideal for multi-needle quilting operations
- Available in larger package sizes, suitable for most quilting machines

MAIN USES

- Bedding
- Mattresses
- Multi-needle quilting operations

PRODUCT RANGE

Ticket	Tex	Dtex/ply	Average Strength cN	Elongation % Min - Max	Recommended Needle Size Metric
80	35	113 x 3	2,166	16 - 22	80 - 100
60	40	138 x 3	2,622	16 - 26	80 - 101





DUAL DUTY™ ECOVERDE™

HARD-WORKING. EASY ON THE ENVIRONMENT.

This premium quality recycled corespun thread combines a high tenacity recycled polyester filament core with a Better Cotton Initiative (BCI) certified cotton cover. This means excellent strength and durability, while the long staple cotton wrap ensures excellent sewing performance and protects the core from needle heat.

Available in special finishes like: Anti-wick PFC-free, UL certificate, Supercotton, Silicone-free for Filtration applications, Anti Infrared treatment, and Protect versions.

WHY CHOOSE DUAL DUTY™ ECOVERDE™?

- Excellent sewing performance in the most demanding applications
- Allows use of finer threads and needles for superior seam appearance without compromising strength
- Outstanding abrasion resistance

MAIN USES

- All next-to-skin garments
- Performance sportswear and bike wear
- Luxury intimates, which require a special shade effect

PRODUCT RANGE

Article Ticket	Ticket	Tex	Length m	Average Strength cN	Elongation % Min - Max	Recommended Needle Size Metric
EDV1025	25	120	1,000	5,390	20 - 26	120 - 140
EVD3030	30	105	3,000	3,724	18 - 24	110 - 130
EVD3036	36	80	3,000	3,528	18 - 24	110 - 130
EVD9050	50	60	10 x 1,000	2,842	18 - 24	100 - 120
EVDC050	50	60	4,500	2,842	18 - 24	100 - 120
EDV5050	50	60	5,000	2,842	18 - 24	100 - 120
EVD9075	75	40	10 x 1,000	1,862	18 - 14	90 - 100
EVDA075	75	40	15,000	1,862	18 - 14	90 - 100
EV40075	75	40	20,000	1,862	18 - 14	90 - 100
EVDB075	75	40	43,500	1,862	18 - 14	90 - 100
EV40120	120	24	20,000	1,039	18 - 22	75 - 90



NEOPHIL™ ECOVERDE™

MAKE MOTORING A LITTLE BIT GREENER.

Coats® Neophil™ EcoVerde™ is the new generation 100% recycled sewing thread, carefully engineered for the automotive industry. It is best suited for seat trim applications and is ideal for sewing decorative stitches for gear stick covers and headliners. These threads were developed to survive high-speed, multidirectional sewing through multiple layers of fabric as well as withstanding UV light for the lifetime of any vehicle.

We specialize in tailoring specific products for each individual OEM, ensuring we meet their unique requirements and preferences.

WHY CHOOSE NEOPHIL™ ECOVERDE™?

- Made from pre-stabilised 100% recycled high tenacity continuous filament polyester
- Available in bonded, lubricated, twisted, monocord and air-jet textured versions
- Carefully tailored constructions and finishes to maximize sewing efficiencies and minimize costs
- Available in a full range of ready-wound bobbins to help enhance your productivity

MAIN USES

- Automotive carpets
- Automotive mats
- Car headliners
- Convertible tops
- Gear stick covers
- Seat covers
- Side door panels
- Seat trims
- Spare wheel covers
- Steering wheel covers

PRODUCT RANGE

Ticket	Tex	Dtex/ply	Min Strength cN	Elongation % Min - Max
80	35	113 x 3	1,900	12 - 25
60	40	138 x 3	2,300	12 - 25
30	80	275 x 3	4,500	12 - 25
20	135	455 x 3	7,200	12 - 25





SYLKO™ ECOVERDE™

HIGH QUALITY. BIG DIFFERENCE.

For extraordinary machine embroidery performance, choose this trilobal recycled polyester thread. It has superior lustre, durability and smooth operation at the highest sewing speeds, which makes it a popular choice among embroidery customers.

WHY CHOOSE SYLKO™ ECOVERDE™?

- Excellent lustre and extensive range of colours and durability
- Superior colour fastness and chemical resistance
- Unique lubrication resulting in high productivity
- Superior abrasion resistance for demanding end uses
- Engineered for high-speed sewing

MAIN USES

- Embroidered products subject to wear-and-tear or frequent laundering
- Caps, headwear, bags and accessories
- Team logos on sportswear and athletic wear
- Household textiles
- Workwear and corporate wear
- Automotive

PRODUCT RANGE

Article Ticket	Ticket	Tex	Length m	Average Strength cN	Elongation % Min - Max	Recommended Needle Size Metric
EV32180	180	18	3,000	747	20 - 28	65 - 75
EV32120	120	27	3,000	1,145	22 - 32	75 - 90



SYLKO™ ECOVERDE™ MATT

FASTER. SMOOTHER. BETTER.

This recycled polyester cospun thread has an attractive matt appearance. The lubrication is carefully adjusted to run perfectly on modern multi-direction embroidery machines at high speeds, meaning a faster, smoother performance.

WHY CHOOSE SYLKO™ ECOVERDE™ MATT?

- Runs at high speed on multi direction embroidery machines
- Choose from over 1000 shades from the Coats Global Colour Book
- Reduced thread breakage compared with staple spun threads
- Prevents oil stain/migration post-embroidery

MAIN USES

- Embroidered products subject to wear-and-tear or frequent laundering
- Workwear and corporate wear
- Household textiles

PRODUCT RANGE

Art / Ticket	Ticket	Tex	Length m	Strength cN	Elongation % Min - Max	Recommended Needle Size Metric
EV30180	18	180	3,000	784	17 - 22	65 - 75
EV30120	24	120	3,000	1,186	17 - 26	65 - 75





SIGNAL™ ECOVERDE™

REFLECT. PROTECT.

The world's first sustainable reflective tape is impossible to ignore. It's made of high-performance glass beads which are laminated onto a durable 100% recycled polyester fabric backing. Shining bright white in poor visibility, it keeps the wearer safe, without harming the planet.

WHY CHOOSE SIGNAL™ ECOVERDE™?

- Can withstand tough Industrial washing
- Meets requirements of EN 20471 and US ANSI/ISEA 107-2015
- Available in various widths
- Global service

MAIN USES

- Workwear and uniforms
- PPE which needs to achieve certification
- Sports and activewear
- Accessories

PRODUCT CERTIFICATION

Coats® Signal™ EcoVerde™ is approved according to EN ISO 20471 high visibility standard. It delivers maximum retro reflective performance. The typical reflective performance (RA in cd/lux/m²) according to EN ISO 20471, table 4 is shown below:

Observation angle	Entrance angle	Coats® Signal™ EcoVerde™	Minimum nom requirement
12'	5°	500	330



DABOND™ ECOVERDE™

EXCEPTIONAL BOND COHESION.

Coats® Dabond™ EcoVerde™ is a recycled bonded polyester thread, specifically designed for non-outdoor applications such as bedding and quilting. It is notably used in the manufacturing of sports goods and outdoor applications. Unlike conventional polyester bonded threads, Dabond™ EcoVerde™ has exceptional bond cohesion, giving it excellent sewing properties even in the toughest conditions.

WHY CHOOSE DABOND™ ECOVERDE™?

- For needle heat protection and smooth sewing
- Excellent bleach resistance

MAIN USES

- Bedding and quilting
- Furniture and Upholstery
- Military applications
- Sport Goods
- Slings
- Safety Harnesses
- Applications requiring vinyl and chlorine bleach-fastness

PRODUCT RANGE

Ticket	Tex	Dtex/Ply	Strength cN	Elongation % Min - Max	Recommended Needle Size Metric
80	35	113 x 3	2,280	12 - 25	80 - 100
60	40	138 x 3	2,850	12 - 25	90 - 110
50	50	275 x 2	3,800	12 - 25	90 - 110
40	60	226 x 3	4,750	12 - 25	110 - 120
30	80	275 x 3	5,700	12 - 25	120 - 140
25	105	275 x 4	7,600	12 - 25	120 - 140
20	135	455 x 3	9,310	12 - 25	130 - 160
28	150	550 x 3	10,500	17 - 27	130 - 160
15	180	660 x 3	12,450	17 - 29	160 - 200
15	210	704 x 3	14,830	17 - 29	160 - 200
12	240	830 x 3	15,580	18 - 34	160 - 200
10	270	940 x 3	21,850	20 - 35	180 - 230
9	350	1100 x 3	27,449	20 - 35	180 - 230
8	400	1444 x 3	27,449	20 - 35	180 - 230
6	450	1670	29,735	20 - 37	180 - 230





ADMIRAL™ TEABAG VERO

THE ALL-NATURAL CHOICE.

Coats® Admiral™ Teabag Vero has been created with leading tea bag machine manufacturers and tea producers. It's a 100% premium quality staple spun organic cotton string that has been developed with sustainability in mind.

Our raw materials are sourced with care for eco-friendly tea bag strings that are certified and enhance the quality of your end products.

WHY CHOOSE ADMIRAL™ TEABAG VERO?

- Engineered to perform at maximum speed on all popular machines
- FDA approved wax lubrication for smooth performance
- Compatible with Constanta, Perfecta, IMA and Mai
- Manufactured in a dedicated certified clean room
- Long length packages and high productivity

MAIN USES

- Teabag string

PRODUCT RANGE

Ticket	Tex	Dtex/ply	Strength cN	Elongation % Min - Max
40	50	185 x 3	1051	6 - 10
25	790	245 x 3	1439	5 - 9
20/30	80/90	295 x 3	1510	5 - 9
20	90	310 x 3	1650	5 - 9

The above strings sizes and specifications are for illustrative purposes and do not exhaustively represent our product offer which includes many more constructions. We also customize constructions to meet the demands of individual customers where required:

- Tea bag strings can be customized for specific machines
- Different make up and length packs available
- Manufactured in both zS and sZ twist directions with transfer tails



ADMIRAL™ FH VERO

KIND TO THE PLANET, AND YOUR CUSTOMERS.

Environmentally friendly Coats® Admiral™ FH Vero is a 100% organic cotton anti-wick tampon withdrawal cord. It provides superior anti-wicking performance, microbial purity and odour protection, and is made in a sterile clean room environment to protect against bio-organisms.

WHY CHOOSE ADMIRAL™ FH VERO?

- Made from 100% organic cotton
- Biodegradable Coats® Admiral™ FH Vero has maximum leak protection
- Operates flawlessly on high-speed machinery with minimal breaks, skips and stops.
- Customized for unique sizes and twists

MAIN USES

- Tampon withdrawal cords for both digital and applicator products

PRODUCT RANGE

Size Ne	Dtex/ply
10/4	600/4
10/9	600/9
11/4	540/4

Coats® is a registered trademark of J&P Coats Limited. EcoVerde™, Dual Duty™, Tre-Cerchi™, Ecoregen™, Ecocycle™, Eco-B™, Epic™, Gramax™, Gral™, Neophil™, Sylko™, Signal™, Dabond™ and Admiral™ are trademarks of J&P Coats Limited.





READY TO START YOUR JOURNEY WITH COATS?

Email communications.pm@coats.com
to learn more about the line
and request a sample kit.

For more information visit
www.coats.com
